



**ANNUAL REPORT
2016-2017**

SAN DIEGO
NATURAL HISTORY
MUSEUM

S & MAMMALS



Our Mission

To interpret the natural world through research, education, and exhibits; to promote understanding of the evolution and diversity of southern California and the peninsula of Baja California; and to inspire in all a respect for nature and the environment.



Dear Museum Friends,

My first year at the helm was exhilarating, challenging and fun. It passed with warp speed, and it will be a hard act to follow.

Every year our scientists publish their research results, but rarely are studies released that shake the foundations of our understanding. Paleontologist Tom Deméré and his 10 co-authors re-wrote the history of human habitation in our hemisphere with the publication of their work on the Cerutti Mastodon site.

Our Entomology Department also generated international attention with the description of a new and large genus of spider found in abandoned silver mines in the Sierra Cacachilas of Baja California Sur. The research highlights our collaboration with Mexican counterparts to document and preserve flora and fauna of the Baja peninsula.

On the public side of the house we opened six exhibitions, including ones on dinosaurs, the mastodon find, and Baja's coastal wilderness. The Atrium has come to life with the new Flying Squirrel cafe and specimens from our Nature to You loan program.

We've also been planning for the first in our new series of exhibitions created by our staff. *Unshelved: Cool Stuff from Storage* will highlight our collections with surprising, fascinating and beautiful specimens from our storage areas.

Behind the scenes we completed a new strategic roadmap that will guide our work during the run up to our 150th anniversary. We are grateful to the

hundreds of staff, volunteers, members, supporters, community leaders, and colleagues who contributed ideas and feedback.

The strategy calls for us to lead with our science and use our results to aid environmental conservation efforts. We're also returning to our roots in citizen science and strengthening partnerships with local science, education, and conservation communities. We'll focus our education efforts to ensure that The Nat remains a critical element of childhood in San Diego, and feeds the curiosity of adults.

With help from The Sefton Foundation we established a new Evolutionary Venture Fund to experiment with new educational offerings and bolster the revenue streams that support our programming.

We are honoring our storied past as we point the Museum toward the future. I value the large and cordial community that supports the Museum, and am proud to present this annual report.

Sincerely,

Judy Gradwohl
President and CEO
San Diego Natural History Museum

Nature is
the biggest
exhibition of all.



The Museum was founded in 1874 by citizen scientists eager to share what they learned about the natural history of this region. With our 150th anniversary approaching in 2024, we identified an opportunity to refocus our purpose and vision, to describe how we will best fulfill our mission, and how we will shape our growth in the years to come. To this end, in fall 2016 we initiated a strategy development process.

Hundreds of diverse stakeholders—staff, representatives from the Board of Directors, Museum members, and community leaders—contributed their perspectives on the Museum’s current work. They also offered input through a framing question that addressed the underlying purpose of the Museum’s role: What is our long-term strategy to sustain and conserve our bioregion?

Feedback, both complimentary and critical, was synthesized into a unifying principle that will guide the Museum’s activities and decision making.

We will expand our leadership in bioregional natural sciences; increase our binational educational efforts with students and the public; and intensify our efforts to protect and conserve the region by sharing our scientific knowledge.

The Museum’s driving force remains unchanged, and we continue to operate with our mission front of mind. As we move forward, and through all aspects of our work, we don’t just seek to understand our world better. We want to share what we know, get people excited about it, and do our part to make the world a better place.





Regionally Focused, Globally Significant.

A mastodon fossil discovery made 25 years ago by researchers from the Museum changed everything we thought we knew about humans in the New World. An April 2017 media announcement placed the Museum's scientists on an international stage, garnered widespread media coverage, and stirred dialog within the science community.

The 130,000-year-old fossil remains were discovered in November 1992 by Museum staff at a freeway expansion project site (named the Cerutti Mastodon site for paleontologist Richard Cerutti who made the discovery). The sharply broken mastodon fossils were found alongside large stones that appeared to have been used as hammers and anvils, which made this the oldest archaeological site in the Americas and pushed back the record of early humans on this continent by more than 100,000 years.

After decades of research by a multi-disciplinary team of respected scientists, in February 2017 the Museum learned a manuscript was accepted for publication by the prestigious peer-reviewed journal *Nature*. The team had only eight weeks to develop an exhibit that would showcase the specimens and manage a global announcement, which included synchronizing efforts among 11 co-authors.

On April 26, 2017, the discovery was announced and made headline news in hundreds of media outlets around the world—*Wall Street Journal*, *Washington Post*,

National Geographic, *BBC News*, *The Guardian*, *Good Morning America*, and more. Since the dust has settled, the discovery continues to be the source of inquiries from both media and scientists alike.

Even though the Cerutti Mastodon news should have been enough to last a year, other research efforts across the institution also yielded international news coverage.

Weeks before the Cerutti Mastodon announcement, the Department of PaleoServices and its unique business model was the subject of a comprehensive article in *Washington Post*. The same week as the announcement, botany made the news. Science writer Natalie Angier spent time with Curator of Botany Dr. Jon Rebman after she became curious about the diverse cacti she saw at Anza-Borrego Desert State Park. The result was a feature article in *The New York Times*, which included an interview with Rebman.

Our Entomology team also made headlines when they—along with experts from Mexico and Brazil—discovered a new genus and species of large cave-dwelling spider, the Sierra Cacachilas wandering spider (*Californctenus cacachilensis*). Read about it on facing page.

The San Diego Natural History Museum continues to invest in research, discovery, and conservation. While focusing on the region of Southern California and the Baja California Peninsula, the institution's research efforts are making a significant impact on the global stage.

Spider Discovery Gains Worldwide Attention

Apparently, few things capture the world's imagination like the thought of finding large spiders in dark places.

When the Museum announced the discovery of a new species of spider earlier this year, the world media went bonkers. News of the discovery of the Sierra Cacachilas Wandering Spider (*Californctenus cacachilensis*), a large species of spider first discovered in abandoned silver mines in Baja California Sur, spread around the globe.

Well over 100 articles were written in more than a dozen languages with an estimated reach of at least 189 million people. While our Entomology Department staff like to think it is because everyone loves spiders, online

comments like, "Nope. Nope. Nope." seem to suggest otherwise.

Although the attention might have been derived from the general public's fear of spiders, the Museum used the opportunity to provide education about spiders and the Museum's mission. In interviews, our resident spider expert, Jim Berrian, emphasized our binational research effort with Mexico and that most spiders, despite their reputation, are harmless. Not every discovery titillates the world's imagination like "giant" cave-dwelling spiders, but the story embodies all the research we do conduct and our continued commitment to exploration and discovery of our natural world.



A Banner Year

We've been busy. We opened six—yes, six!—exhibitions last year. *The Last Hurrah: the Photography of Abe Ordover* was the culmination of a decade of work by local gallery owner and Museum partner Abe Ordover. We greatly appreciate Abe's curation of 35 shows in the 4th floor photography gallery.

We were thrilled to be the first museum—outside of the National Geographic Museum in Washington, D.C.—to present *Photo Ark* (pictured here), which showcased the work of National Geographic photographer Joel Sartore. These photos are a small part of his much bigger *Photo Ark* project to document the world's animal species before they disappear. Each image is a visual connection between the animals and people who can help protect them.

Baja's Wild Side featured the breathtaking photography of shark expert and Scripps marine biologist Dr. Dan Cartamil as he explored Baja California's Pacific coast region. The exhibition, which remains on view, chronicles a fragile paradise of remote and hauntingly beautiful landscapes, wildlife, and ancient rock art.

Animals: Machines in Motion, a traveling exhibition from The Field Museum, engaged visitors with hands-on activities that brought the concept of biomechanics to life. Visitors could feel how hard a giraffe's heart works to pump blood up to its head, see technological breakthroughs that were inspired by nature's ingenuity, and come face-to-face with a life-sized cast of Sue, the largest and most complete *T. rex* ever discovered.

And since dinosaurs are our thing, we closed out the summer with the immersive *Ultimate Dinosaurs*, featuring unfamiliar dinosaurs that evolved in isolation in South America, Africa, and Madagascar. Augmented reality technology allowed visitors to see how the continental drift altered the landscape of the ancient world, setting the stage for the evolution of these amazing creatures.

And of course, our permanent exhibition *Extraordinary Ideas from Ordinary People: A History of Citizen Science* opened to much fanfare. Read the full story on facing page.





Ordinary People and Extraordinary Ideas: One Year Later

In August 2016, the double glass doors opened to the public for the brand-new Eleanor and Jerome Navarra Special Collections Gallery, the home of our signature exhibition *Extraordinary Ideas from Ordinary People: A History of Citizen Science*. This marked the first time in many years we opened a new exhibition space on the main research floor of The Nat.

Within those glass doors we showcase some of our most precious treasures from the collection of rare books, original fine art, archival photographs, and field notes sequestered away in our Research Library. Some of these treasures include the double elephant folio of *Audubon's Birds of America*, one of the world's rarest books, along with many other antiquarian volumes such as *Hortus Sanitatis*, a 500-year-old medicinal book. Because conservation concerns require us to rotate pages, specimens, and the books themselves, our visitors will always see new things on return visits.

The most compelling aspect of this exhibition is the ability to see the authentic antiquarian books alongside the digitized versions, which gives viewers the best of both worlds. Guests now have the ability to greatly

expand pages and see tiny details that were previously invisible to the naked eye.

Although the exhibition's theme of citizen science was years in the making, it could not have been more timely this year in terms of the large number of active citizen science projects proliferating in our own Museum as well as many other science institutions worldwide. Visitors who appreciate art, writing, or photography—but do not necessarily see themselves as science nerds—are encouraged to participate in science in new ways.

Never before on view original art works from the early 1900s by A. R. Valentien are on display in our upstairs mezzanine. The kids' Book Nook upstairs has become a favorite hangout for little visitors and their adult companions, who welcome the opportunity to sit and read in a whimsical and kid-friendly spot.

In March 2017 the Museum received the *American Association of Museums Excellence in Exhibition Honorable Mention Award* for this exhibition. This national recognition underscores the stellar work of our exhibits team.

Exploration: It's In Our Nature

Expedition. The word conjures up images of pith helmet clad explorers led by local guides hacking their way through vine-tangled jungles in search of lost temples. Or perhaps you see ice-frosted mustaches on fur-laden explorers led by sled dogs across limitless ice sheets. Beyond these Hollywood stereotypes, expedition simply implies exploring the unexplored, even when it is someone's backyard.

Every day, the sun rises over the Sierra Cacachilas for the more than 215,000 residents of La Paz in Baja California Sur. Less than a 45-minute drive from the local airport, these mountains form the eastern backdrop for Baja California Sur's largest city. Yet, for centuries they remained unexplored by biologists.

This past year, the Museum completed a four-year effort to explore the Sierra Cacachilas, an area of arroyos, steep walled canyons, oak studded hillsides, and rocky peaks. This diversity of habitats creates lots of little nooks and crannies that are home to an impressive diversity of life.

The research team of 49 scientists, students, and volunteers documented the presence of 169 species of vertebrates and 496 species of plants in the Sierra Cacachilas. Based on a survey of better known invertebrate groups (e.g., butterflies and spiders), the team estimates that there are anywhere from

1,800 to 3,600 species of insects and relatives. It is safe to say that the Sierra Cacachilas harbors a great deal of regional biodiversity. For instance, the Sierra Cacachilas is home to roughly a quarter of all the bird species and half of all the butterflies known from the state of Baja California Sur (102 of 432 bird species; 50 of 117 butterflies).

In addition to harboring lots of biodiversity, the Sierra Cacachilas held a few surprises for our intrepid explorers. Our botanists discovered 16 species of plants that were thought to be only found in the mountains further south, suggesting that the Sierra Cacachilas are a small "sky island" refuge for rare plants. Of course no expedition is complete without a new species or two, and the Cacachilas did not disappoint. The now celebrated Sierra Cacachilas Wandering Spider captured the world's attention when its discovery was announced, and the entomology team continues to work on finalizing scientific publications to describe three other new species.

Expedition is synonymous with exploration and discovery, but it is also the first step in conservation. A lasting contribution of this study is that it will serve as a benchmark for future monitoring of environmental change in the region. Without knowledge we cannot conserve, and a surprising amount of the world remains unknown, even areas in our own backyard.





Live Oaks Society Continues to Grow Through Personal Connections and Contributions

There are as many reasons for someone to name the San Diego Natural History Museum in their estate plans as there are Museum members.

For some, it's knowing that this Balboa Park legacy institution has already been in existence for 143 years and is here for the long run. Others say it's a matter of shared values—a concern for the environment and an appreciation for science education. Some take pride in the Museum being the source for pre-eminent natural science information about the region, and want to help see that role maintained and expanded. Still others have deeply personal reasons, often drawn from their family experience.

One of these heartwarming stories is from Phil Unitt, the Dennis and Carol Wilson Endowed Curator of Ornithology. He shared a deeply personal story at this summer's Live Oaks rooftop reception honoring new Live Oaks members. Phil's brother, followed by his

mother, both died in a short time frame—within the past three years—suddenly leaving Phil with a great deal to think over. Having spent his very notable career at the Museum, Phil concluded that leaving his estate to the Museum was an important statement, a way to “give back”.

As for many of us, however, the process of finding an attorney, answering questions, and filling out paperwork, had slipped to the “back burner.” Often even close friends and family do not realize what a person's wishes truly are. Phil knew he didn't want to leave loose ends and uncertainty behind him so he took steps to find an attorney who worked well with him. Phil's will and a trust are now complete, and now that his wishes are clearly stated, he can have confidence in his plans and enjoy knowing he will be assisting the Museum far into the future.

Thank you, Phil, and welcome to Live Oaks.



Volunteers Provide Support Valued at \$1.6 Million

All of the Museum's volunteers are special but John La Grange, botany department associate, is exceptional. John, pictured above, started as a volunteer 11 years ago working on the *San Diego County Plant Atlas*. Botany staff was so impressed with his ability to identify plants that they invited him to join them in the field. Shortly after, they asked him to be a department associate, a designation given to volunteers who go above and beyond. John has earned that title. He not only collects and mounts specimens, but he performs other tasks in the department, such as scoping out new locations to collect, contributing to scientific publications, and helping prepare for field research.

Because of John's knowledge of the Baja peninsula, Curator of Botany Jon Rebman invited him to participate in trips to the Sierra Cacachilas Mountains and Revillagigedo Islands. On the islands, John focused on another passion—shells—as well as assisting Jon Rebman with collecting plants. John prepared a report on the shells he found which will be included in a soon-to-be published scientific paper for the *Proceedings*, our Museum's scientific publication. John has also participated in field work for a National Geographic

grant to find 15 species in Baja that have not been collected since the 1800s. On two separate trips, even with questionable locality information, they recently discovered two of the missing species.

Volunteers like John are just the tip of iceberg. Last year 750 volunteers contributed over 56,000 hours in many roles. That is equivalent to 27 full-time employees and \$1.6 million in donated time. Volunteers in the Biodiversity Research Center of the Californias perform tasks that help maintain the collections. Teenagers assist the staff in summer, spring, and winter camps. Whalers educate passengers on whale watching trips. Canyoneers lead free public nature hikes. Docents provide outreach to the schools and, along with other volunteers, they engage visitors with the Museum. A dedicated crew ensures the live animals are healthy and well fed. Other volunteers help with mailings, filing, and other office tasks.

Thanks to these dedicated volunteers, the Museum can fulfill its mission to provide education and conduct research on the biodiversity of our region.

New Trail Guide Encourages People to Get Outside and Appreciate Nature

We've always been an advocate of getting people outdoors to appreciate the beauty and diversity of our area. And in September 2016, our Canyoneers made it easier for everyone to get outside and hit the trails when they released their very own trail guide.

Coast to Cactus: The Canyoneer Trail Guide to San Diego Outdoors features more than 250 hikes with maps, photographs, and detailed descriptions. Different from other guidebooks, it is focused on the flora and fauna of the region, encouraging hikers to look for what makes the area special and to gain an appreciation for the plants, animals, and physical features that create distinct habitats. The book is similar to the experience of being on a guided hike with a Canyoneer.

The project was a dozen years in the making and was made a reality thanks to the efforts of a whole team of people, namely more than 50 of our Canyoneers—all volunteers—the Museum curators, and Board Member Diana Lindsay, owner of *Sunbelt Publications* and a Canyoneer herself, who tirelessly served as a champion for this project.

The Canyoneer program is just one of several programs the Museum offers to get people out in nature. Another set of dedicated volunteers, the Whalers, go on board every Hornblower whale watching cruise to engage passengers by identifying whales, dolphins, and marine life, showing whale specimens like baleen and vertebrae, and facilitating activities for the kids onboard.

We believe in preserving this incredible region. And when people explore and appreciate it firsthand, they're that much more likely to have a passion for the cause. Our passion for nature is infectious.



Increasing Accessibility Throughout the Park

In 2014, the Museum offered a first-of-its-kind museum inclusion program for visitors with an autism spectrum disorder (ASD). ASD Mornings at The Nat is a monthly program that opens the Museum early to the families of visitors with ASD so that they can explore the Museum in an environment they find more comfortable—one with fewer people, higher light levels, and lower volume levels. This is a large and growing community, and in the three years since this program began the ASD community has responded positively to it, and other museums have replicated its success.

Based in part on this pioneering effort, The Nat created a program called SPECTRUM Social Stories to address the needs of an aging ASD population. With support from The Institute of Museum and Library Services, the Balboa Park Cultural Partnership, and the National Foundation for Autism Research, this program provides a structured opportunity for high functioning, verbal young adults ages 18-25 with ASD to come together with their peers and practice social skills, participate in organized trips to seven Balboa Park museums, and work with Museum staff to create written social stories for each of the museums visited, and for Balboa Park overall. A social story is a written or visual access tool to help individuals with ASD understand the various social interactions, situations, behaviors, skills, or concepts that are expected in a public setting.

Besides preparing other visitors with ASD for what they will experience when visiting Balboa Park, these eight social stories will also be used as “access narratives” for visitors with other cognitive and physical differences such as Sensory Processing Disorder.

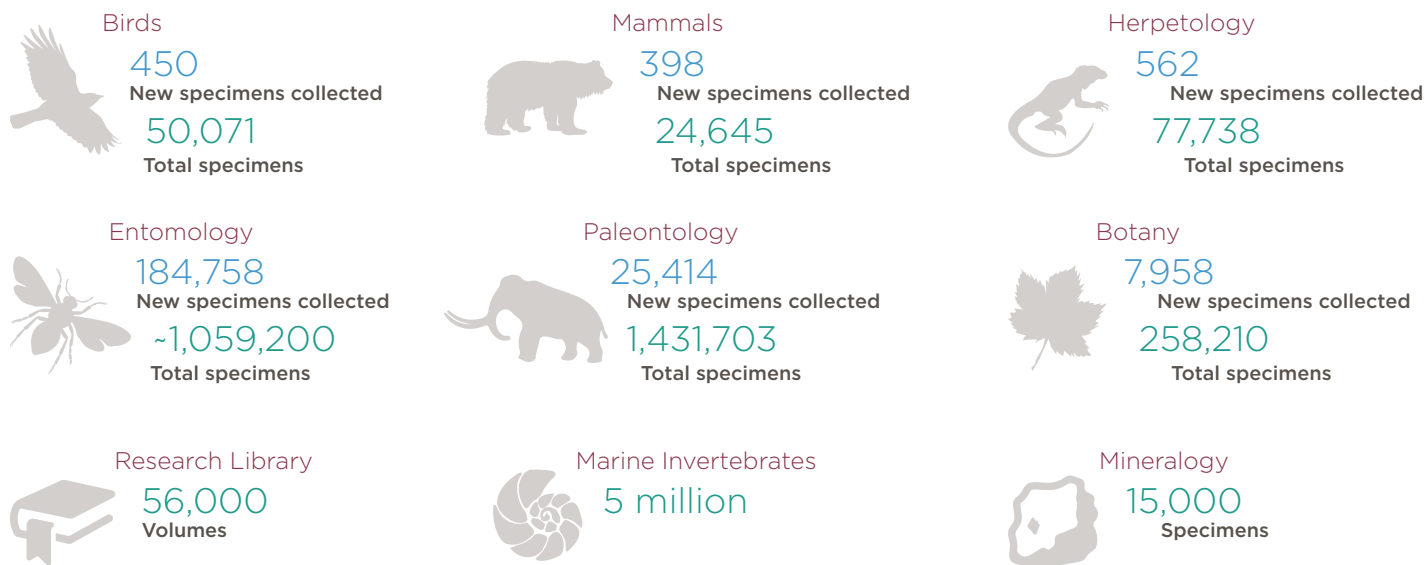
Museums provide opportunities for individuals, families, and groups to spend quality time together in an interactive environment that aims to foster a sense of community and enjoyment. Through the creation of these programs, and the upcoming availability of the social stories for a wider audience, The Nat is ensuring that these benefits are available to a more inclusive group of visitors.



By the Numbers

Collections

~8 million
total number of specimens



Visitation



Public Programs

Nature to You Loan Library
628 loans reaching **91,316** people

School Programs
793 programs reaching **29,463** people

Family and Public Programs
116 programs serving **8,111** participants

Museum Access Funds
6,374 students from Title 1 schools served

Social Media

40,517
likes

2,023
followers

9,013
followers

209
subscribers

Volunteers

Canyoneers
led **81** hikes for **2,297** people

Docents
reached **4,598** students and chaperones with **166** programs

Whalers
reached **27,871** passengers on **271** cruises through
Hornblower Cruises and Events

64 high school students
volunteered for spring, winter and summer camps

9 high school and **3** college students
completed internships



750
total volunteers



55,929
total volunteer hours



\$1,591,739
Dollar value of volunteer hours
(per Bureau of Labor Statistics)

Financials

During fiscal year 2016-17, the Museum focused on financial sustainability through strategic planning, identifying new opportunities to fund our mission related activities, and active resource management. As a result, total assets were consistent with the prior year. Cash decreased by \$800K; however, invested endowment funds grew to \$17.3M, an increase of \$1.8M, showing that the Museum is committed to a saving and investment program that provides ongoing support of operations, research and education.

While our total revenue decreased, we finished the fiscal year with a small operating surplus. Activities that produce the highest sources of revenue continue to be admissions, contributions and Bio and Paleo Services contracts. Contract income was consistent with the prior year and continues to provide much needed support for scientific research and related education programs.

The overall decrease in revenue was due to two primary factors. For the first time in five years, the Museum was not soliciting donations for a capital or special projects campaign. As a result, contributions revenue decreased to a more typical level. Although contributions were about \$4 million less than in fiscal year 2015-16, a portion of funds from last capital campaign were designated to support current projects. Also, two traveling exhibitions hosted this year did not perform as expected, which resulted in about \$240K less in admissions revenue. The Museum's response

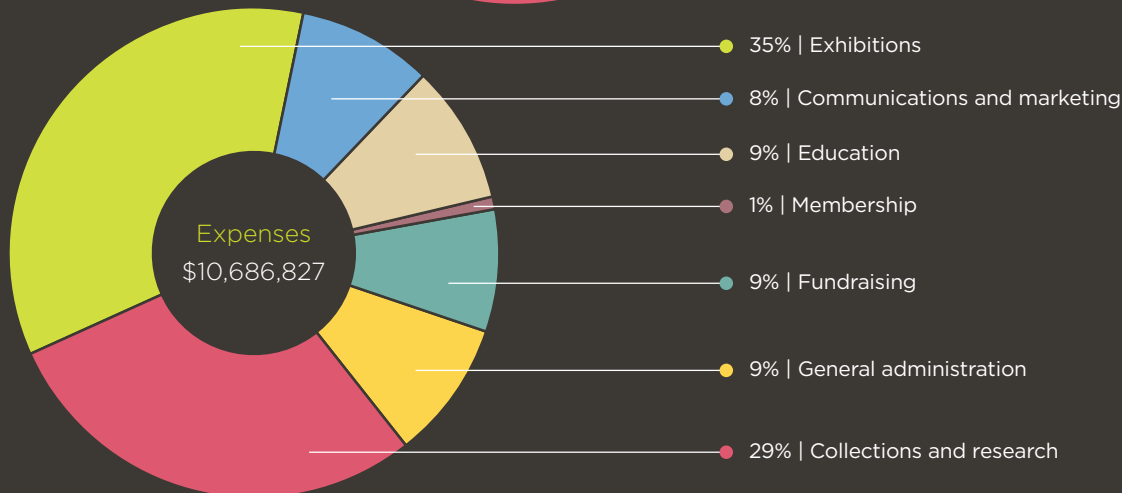
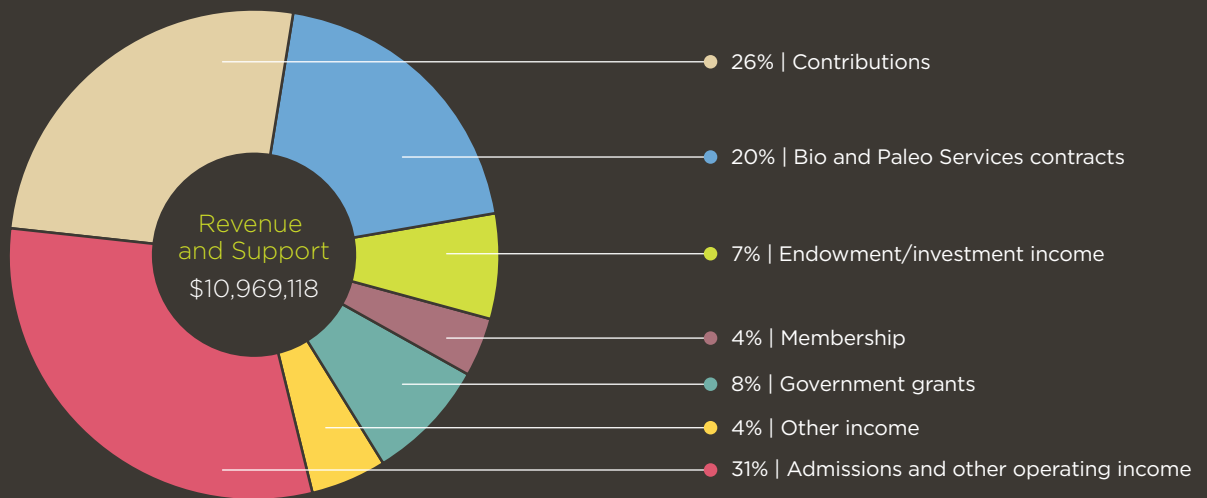
was to move away from traveling exhibitions and begin working on a new project that features our own historic collections. *Unshelved: Cool Stuff from Storage* will open in November 2017.

Exhibition and science/research expenses were slightly less than the prior year, while general administration expenses were essentially the same. That is consistent with a year in which our core exhibitions have been completed, and operations are normalizing, pending the implementation of new strategic initiatives adopted this year.

The Museum's financial condition at June 30, 2017 is reflected in the Statement of Financial Position (at right). Additional details can be found in the audited financial statements, which are available on our website. The continued focus on sustainable operations, made possible through generous gifts and increasing diversified sources of revenue, has resulted in a strong financial foundation that will allow us to continue to invest in scientifically relevant, mission-related research and education activities.



Terri Buchanan
Treasurer
Museum Board of Directors



July 1, 2016–June 30, 2017

Operating Revenue and Expenses

Revenue and Support

| | Fiscal Year 2017 | | Fiscal Year 2016 | |
|---------------------------------------|---------------------|-------------|---------------------|-----|
| Admissions and other operating income | \$3,398,737 | 31% | \$3,593,518 | 24% |
| Bio and Paleo Services contracts | \$2,232,424 | 20% | \$2,364,382 | 16% |
| Endowment/investment income | \$762,029 | 7% | \$492,339 | 3% |
| Contributions | \$2,813,048 | 26% | \$6,951,469 | 47% |
| Membership | \$404,251 | 4% | \$440,202 | 3% |
| Government grants | \$854,674 | 8% | \$639,038 | 4% |
| Other income | \$503,955 | 4% | \$444,171 | 3% |
| Total Revenue and Support | \$10,969,118 | 100% | \$14,925,119 | |

Expenses

| | | | | |
|------------------------------|---------------------|-------------|---------------------|-----|
| Collections and research | \$3,062,617 | 29% | \$3,172,331 | 27% |
| Education | \$932,630 | 9% | \$984,336 | 8% |
| Exhibitions | \$3,753,516 | 35% | \$4,186,197 | 36% |
| Fundraising | \$947,963 | 9% | \$977,758 | 8% |
| Membership | \$128,068 | 1% | \$180,115 | 2% |
| Communications and marketing | \$862,732 | 8% | \$1,024,019 | 9% |
| General administration | \$999,301 | 9% | \$1,101,297 | 9% |
| Total Expenses | \$10,686,827 | 100% | \$11,626,053 | |

Operating revenue and support in excess of expenses

\$282,291

\$3,299,066

Financial Position

Assets

| | Fiscal Year 2017 | Fiscal Year 2016 |
|-----------------------------------------------------|---------------------|---------------------|
| Cash | \$2,055,454 | \$2,855,487 |
| Investments and perpetual trusts | \$24,968,799 | \$22,840,881 |
| Receivables and prepaid expenses | \$2,070,266 | \$2,321,625 |
| Property, equipment (less accumulated depreciation) | \$21,151,314 | \$22,155,841 |
| Total Assets | \$50,245,833 | \$50,173,834 |

Liabilities

| | | |
|---------------------------------------|--------------------|--------------------|
| Accounts payable and accrued expenses | \$1,245,095 | \$1,291,512 |
| Other short term liabilities | \$123,740 | \$113,951 |
| Notes payable | \$99,386 | \$525,000 |
| Total Liabilities | \$1,468,221 | \$1,930,463 |

Net Assets

| | | |
|-------------------------|---------------------|---------------------|
| Unrestricted | \$21,168,727 | \$22,536,860 |
| Temporarily restricted | \$10,251,861 | \$8,393,574 |
| Permanently restricted | \$17,357,024 | \$17,312,937 |
| Total Net Assets | \$48,777,612 | \$48,243,371 |

Total Liabilities and Net Assets

\$50,245,833

\$50,173,834

Biodiversity Research Center of the Californias Associates

Birds and Mammals Research Associates

Ms. Susan Arter
Dr. James Diffendorfer
Dr. Marilyn Fogel
Dr. Jeffrey L. Lincer
Dr. Eric Mellink
Dr. Michael A Patten
Dr. Amadeo M. Rea
Dr. Wayne D. Spencer
Dr. Aaron Sasson
Mr. Christopher Swarth
Dr. Howard H. Thomas
Dr. Christopher Clark

Birds and Mammals Departmental Associate

Ms. Samantha Marcum

Botany Research Associates

Dr. José Luis León de la Luz
Dr. Michael S. Mayer
Dr. Michael G. Simpson
Dr. José Delgadillo Rodriguez
Dr. Peter Vroom
Dr. Sula Vanderplank
Dr. Pedro Peña Garcillán

Botany Departmental Associate

Dr. Ken Bowles
Ms. Margaret Mulligan
Mr. Jim Rocks
Mr. John La Grange

Botany Field Associates

Mr. Larry Hendrickson
Ms. Victoria Marshall
Mr. Warren Schmidtman

BRCC Research Associates

Dr. Exequiel Ezcurra
Dr. Xavier López-Medellín
Dr. Elisabet Wehncke
Dr. Enriqueta Velarde

Collection Care Associate

Dr. Paisley Cato

Entomology Research Associates

Dr. John Brown
Mr. David K. Faulkner
Dr. Matthew Graham
Dr. Marshal C. Hedin
Dr. Tomas M. Mustelin
Dr. Geoffrey Morse
Dr. María Luisa Jiménez
Dr. Daniel Marshalek
Dr. James Zahniser

Entomology Departmental Associate

Mr. Michael Klein
Mr. Ron McPeak
Ms. Daniela E. Ramirez C.

Herpetology Research Associates

Dr. Charles Crumly
Dr. Lee Grismer
Dr. William Presch
Dr. Todd Reeder
Dr. Patricia Galina
Dr. Gorgonio Ruiz Campos

Herpetology Departmental Associates

Ms. Anny Peralta Garcia
Mr. Clark Mahrtdt
Mr. Richard Schwenkmeyer
Mr. Angelo Soto-Centeno
Mr. Jorge Valdez Villavicencio
Mr. Dustin Wood

Library Emeritus

Ms. Carol Barsi

Library Departmental Associate

Dr. Reed Pierce

Marine Invertebrates Research Associate

Dr. Joel Martin

Marine Invertebrates Departmental Associate

Mrs. Carole M. Hertz
Mr. Larry Loveall

Mineralogy Departmental Associate

Ms. Pamela Bruder

Paleontology Research Associates

Dr. J. David Archibald
Dr. Annalisa Berta
Dr. Michelangelo Bisconti
Dr. Robert M. Chandler
Dr. Eric Eckdale
Dr. Paul Murphey
Dr. Charles L. Powell
Dr. Donald R. Prothero
Dr. Hugh M. Wagner
Dr. Steven Holan
Mr. Robert Reynolds

Paleontology Department Associates

Mr. Richard Cerutti
Ms. H. Patricia Don Vito
Ms. Carol Stadum



Publications

Ahmad, H.H., Grafe, T.U., Dornburg, A., D.S., McLeod, A.M. Bauer, R.A., Wahab, L.L. Grismer, and G.J. Watkins-Colwell. 2016. The amphibians, reptiles, and fishes of the 2012 Bukit Pagon Expedition, Brunei Darussalam. *Bulletin of the Peabody Museum of Natural History* 57: 97-114.

Alaniz-Gutiérrez, L., R. Villanueva-Gutiérrez, J. Delgado, M.E. Ortiz-Acosta, E. García-Moya, and T. Medina-Cervantes. 2017. Caracterización palinológica de mieles del valle de Mexicali, Baja California, México. *Polibotanica* 43: 1-29.

Archibald, J.D. 2016. Book Dispatch from Rome. *Hoja Volante* 272:12-16.

Averianov, A.O. and Archibald, J. D. 2016. New evidence on the stem placental mammal *Paranyctoides* from the Upper Cretaceous of Uzbekistan. *Palaeontologia Polonica* 67: 25-33.

Berta, A., A. Lanzetti, E.G. Ekdale, and T.A. Deméré. 2016. From teeth to baleen and raptorial to bulk filter feeding in mysticete cetaceans: The role of paleontological, genetic, and geochemical data in feeding evolution and ecology. *Integrative & Comparative Biology* 56:1271-1284.

Berta, A. and T.A. Deméré. 2017. Baleen whales, Evolution. In: B. Würsig, J.G.M. Theewissen, and K. Kovacs (eds.). *Encyclopedia of Marine Mammals*, 3rd Edition. Academic Press, Cambridge, MA. pp. 69-78.

Bisconti, M., O. Lambert, and M. Bosselaers. 2017. Revision of "*Balaena*" *belgica* reveals a new right whale species, the possible ancestry of the northern right whale, *Eubalaena glacialis*, and the ages of divergence for the living right whale species. *PeerJ* 5:e3464 <https://doi.org/10.7717/peerj.3464>.

Burge, D., Thorne, J. H., Harrison, S.P., O'Brien, B.C., Shevock, J.R., Alverson, E.R., Hardison, L.K., Delgadillo, J., Junak, S., Oberbauer, T., Rebman, J.P., Riemann, H., Vanderplank, S.E. & T. Barry. 2016. Plant diversity and endemism in the California Floristic Province. *Madroño* 63 (2): 3-206.

Burns, M., J. Starrett, S. Derkarabetian, CH. Richart, A. Cabrero, M. Hedin. 2017. Comparative performance of double-digest RAD sequencing across divergent arachnid lineages. *Molecular Ecology Resources* 17 (3), 418-430.

Carlson, DE, and M. Hedin. 2017. Comparative transcriptomics of *Entelegyne* spiders (*Araneae*, *Entelegynae*), with emphasis on molecular evolution of orphan genes. *PLOS One*, 12 (4), e0174102.

Castro-Aguirre, J.L., G. Ruiz-Campos, and A. Varela-Romero. 2016. *Fundulus lima* Vaillant, 1894. Pages 371-374. En: *Los peces dulceacuicolas de México en peligro de extinción* (G. Ceballos, E. Díaz-Pardo, L. Martínez-Estévez and H. Espinosa-Pérez, eds.). Fondo de Cultura Económica, México, D.F.

Clark, C.J. 2017. eBird records show substantial growth of the Allen's Hummingbird (*Selasphorus sasin sedentarius*) population in urban Southern California. *The Condor: Ornithological Applications*. 119: 122-130.

Clark, C.J., Kirschel, A. N. G., Hadjioannou, L., and Prum, R. O. 2016. Smithornis broadbills produce loud wing song by aeroelastic flutter of medial primary wing feathers. *J. Exp. Biol.*, 219: 1069-1075.

Clark, C.J. 2016. North American Hummingbirds: an Identification Guide. By George C. West. [Book Review]. *Wilson Journal of Ornithology*, 128: 465-467.

Clark, C. J. 2016. Locomotion-Induced Sounds and Sonations: Mechanisms, Communication Function, and Relationship with Behavior. In *Vertebrate Sound Production and Acoustic Communication* (Suthers, R., and Fitch, T., eds.). *Springer Handbook of Auditory Research*, 53: 83-117.

Clark, R.J., A. Sieradzki, J.L. Lincer, T.L. Fleming, and J.P. Clark. 2016. What do we know about the Short-eared Owl *Asio flammeus* from its literature worldwide? Presented by RJC at the 2016 Raptor Research Foundation Conference in Cape May, NJ.

Clark, R.J., T.L. Fleming, A. Sieradzki, J.L. Lincer and J.P. Clark. 2017. The World Owl Bibliography (WOB) [German language]. *Kauzbrief* 29: 9-20.

Cobos, A.J., L.L. Grismer, P.L. Wood, Jr., E.S.H. Quah, S. Anuar, and M.A. Muin 2016. Phylogenetic relationships of geckos of the *Hemiphyllodactylus harterti* group, a new species from Penang Island, Peninsular Malaysia, and a likely case of true cryptic speciation. *Zootaxa* 4017: 367-380.

Davis, H.R., L.L. Grismer, R.L. Klabacka, M.A. Muin, E.S.H. Quah, S. Anuar, Wood, Jr., P.L., and J.W. Sites. 2016 The phylogenetic relationships of a new stream toad of the genus *Ansonia* Stoliczka, 1870 (Anura: Bufonidae) from a montane region in Peninsular Malaysia. *Zootaxa* 4103: 137-153.

De León-Girón, G., R. Rodríguez-Estrella, and G. Ruiz-Campos. 2016. Current distribution status of Golden Eagle (*Aquila chrysaetos*) in northwestern Baja California, México. *Revista Mexicana de Biodiversidad* 87: 1328-1335.

Delgado-Fernández, M., P.P. Garcillán and E. Ezcurra. 2016. On the age and growth rate of giant cacti: Radiocarbon dating of the spines of cardon (*Pachycereus pringlei*). *Radiocarbon* 58(3): 479-490.

Derkarabetian, S., M. Burns, J. Starrett, M. Hedin. 2016. Population genomic evidence for multiple Pliocene refugia in a montane-restricted harvestmen (Arachnida, Opiliones, *Sclerobunus robustus*) from the southwestern United States. *Molecular Ecology* 25, 4611-4631.

DiDomenico, A., M. Hedin. 2016. New species in the *Sitalcina sura* species group (Opiliones, Laniatores, Phalangodidae), with evidence for a biogeographic link between California desert canyons and Arizona sky islands. *Zookeys* 586: 1-36, doi: 10.3897/zookeys.586.7832.

Ehwan, N., M. N. Shukor, Y. Salmah, L. L. Grismer, and A. Norhayati. 2016. Herpetofauna diversity at Gunung Raya, Pulau Langkawi, Kedah, Peninsular Malaysia. <http://dx.doi.org/10.1063/1.4966846>.

Eufrazio-Torres, A.E., E.V. Wehncke, X. López-Medellín, B. Maldonado-Almanza. 2016. Fifty years of environmental changes of the Amacuzac riparian ecosystem: A social perceptions and historical ecology approach. *Ethnobiology and Conservation* 5(8): 1-35, doi:10.15451/ec2016115.8135.

Falcón-Brindis A., C. Palacios-Cardiel and M. L. Jiménez. 2016. Ampliación de la distribución de *Dinapate wrightii* (Coleoptera: Bostrichidae) en Baja California Sur, México. *Acta Zoologica* (nueva serie) 32(3):407-409.

Figueroa, A. Alexander D. McKelvy, L. Lee Grismer, Charles D. Bell, Simon P. Lailvaux. 2016. A Species-Level Phylogeny of Extant Snakes with Description of a New Colubrid Subfamily and Genus. *Plos One* DOL:10.1371.

Flores-Galván, M.A., E. Arellano-García, G. Ruiz-Campos, and L.W. Daesslé. 2017. Genotoxic Assessment of Some Inorganic Compounds in Desert Pupfish (*Cyprinodon macularius*) in the Evaporation Pond from a Geothermal Plant. *Bull. Environ. Contam. Toxicol.* DOI 10.1007/s00128-017-2114-6.

Frick, W.F., P.A. Heady III, and B.D. Hollingsworth. 2016. Geographic Distribution: *Lampropeltis californiae* (California Kingsnake). *Herpetological Review* 47: 427.

Fullen, K.L., T. Mandish, and C.R. Mahrdt. 2016. Ecological considerations in spring development. USDA, Natural Resources Conservation Service, Environmental Quality Technical Note No: WNTSC TN 190-EQ-1, August 2016.



Garcillán, P.P. and **J.P. Reberman**. 2016. Nota sobre los primeros registros históricos de dos plantas invasoras en la península de Baja California: Crónica del misionero jesuita Miguel del Barco. *Acta Botánica Mexicana* 115: 43-49.

Gilbert, Ian and **Robert Reynolds**, 2017. Faults, mountains, lakes, and caves, the geologic story of San Bernardino County. In: R. E. Reynolds (ed.) California State University, Desert Studies Consortium, Desert Symposium Volume: p. 334.

Gillespy, P., **D.R. Prothero**, and V.J.P. Syverson, 2016. Stasis in teratorms form the La Brea tar pits during the last glacial-interglacial cycle. *New Mexico Museum of Natural History Bulletin* 74: 67-71.

Goebel, M., C. Godínez, **S. Vanderplank** and J. Castro. 2017. Cabo Pulmo, Baja California, Mexico: Linking Community Resilience with Marine Conservation. 9p. In: Climate Change Impacts on Coastal & Marine Tourism. CREST & Puntacona Ecological Foundation. Business Expert Press.

Goldberg, Stephen R., Charles R. Bursey, and **L. L. Grismer** 2016. Endoparasites in the Stump-tailed Gecko, *Gehyra* (Squamata: Gekkonidae) from Malaysia. SAURIA.

Goldberg, S.R., Charles R. Bursey, and **L. L. Grismer** 2016. *Acanthosaura armata* (Peninsular Horned Tree Lizard). *Herpetological Review* 47.

Goldberg, S.R., Charles R. Bursey, and **L. L. Grismer** 2016. *Cnemaspis bidongensis* (Pulau Bidong Rock Gecko). Endoparasites. *Herpetological Review* 47.

Goldberg, S. R. and **L. L. Grismer** 2016. *Cyrtodactylus batucolus* (Besar Island Bent-toed Gecko). *Herpetological Review* 47.

Goldberg, S.R., Charles R. Bursey, and **L. L. Grismer** 2016. *Cyrtodactylus tebuensis* (Tebu Mountain Bent-toed Gecko). *Herpetological Review* 47.

Goldberg, S.R., and **L. L. Grismer**. 2016. *Asthenodipas lasgalenensis* (Mirkwood Forest Slug Snake). *Herpetological Review* 47.

Goldberg, S.R., Charles R. Bursey, and **L. L. Grismer**. 2016. Helminths of Five Species of *Gonocephalus* Lizards (Squamata: Agamidae) from Peninsular Malaysia. *Pacific Science* 70: 373-380.

Goldberg, S. R. and **L. L. Grismer**. 2016. Notes on reproduction of the Stump-toed Gecko, *Gehyra mutilate* (Squamata: Gekkonidae) from Peninsular Malaysia. SAURIA 38: 56-59.

Goldberg, S. R., Charles R. Bursey, and **L. L. Grismer**. 2016. Helminths of five species of lizards of the genus *Draco* (Squamata: Agamidae) from peninsular Malaysia and one species from Cambodia. *Phyllomedusa* 15.

Goldberg, S. R. and **L. L. Grismer**. 2017. Notes on reproduction of the Littoral Skink, *Emoia atrocostata* (Squamata: Scincidae) from Peninsular Malaysia. SAURIA 39:54-57.

González-Acosta, A.F., M.I. Miranda, J. De La Cruz-Torres, and **G. Ruiz-Campos**. 2016. New records and range extension of three fish species in the Gulf of California. *Marine Biodiversity* DOI 10.1007/s12526-016-0612-0.

González-Trujillo, R. M. Correa-Ramírez, E. Ruiz-Ramírez, E. Ruiz-Sánchez, E. Méndez-Salinas, **M. L. Jiménez** and F. García de León. 2016. Pleistocene refugia and their effects on the phylogeography and genetic structure of the wolf spider *Pardosa sierra* (Araneae: Lycosidae) in the Baja California Peninsula. *Journal of Arachnology*. 44(3):367-379.

Gottscho, A. D., **D. A. Wood**, A. G. Vandergast, J. Lemos-Espinal, J. Gatsy, and **T. Reeder**. 2017. Lineage diversification of fringe-toed lizards (Phrynosomatidae: *Uma notata* complex) in the Colorado Desert: Delimiting species in the presence of gene flow. *Molecular Phylogenetics and Evolution* 106:103-117.

Gowender, R., **M. Bisconti**, and A. Chinsamy. 2016. Late Miocene-early Pliocene baleen whale assemblage from Langebaanweg, west coast of South Africa (Mammalia, Cetacea, Mysticeti). *Alcheringa* 40: 542-555.

Graham, M.R., **D.A. Wood**, J.A. Henault, Z.J. Valois, and P.E. Cushing. 2017. Ancient lakes, Pleistocene climates and river avulsions structure the phylogeography of a large but little-known rock scorpion from the Mojave and Sonoran deserts. *Biological Journal of the Linnean Society*, blx058. doi: 10.1093/biolinnean/blx058.

Grismer, L.L., P.L. Wood Jr, S. Anuar, H.R. Davis, A.J. Cabos, and M. L. Murdoch. 2016. A new species of karst forest Bent-toed Gecko (genus *Cyrtodactylus* Gray) not yet threatened by foreign cement companies and a summary of Peninsular Malaysia's endemic karst forest herpetofauna and the need for its conservation. *Zootaxa* 4061 (1): 001-017.

Grismer, L.L., Wood, Jr., et al. Sites 2016 Two new Bent-toed Geckos of the genus the *Cyrtodactylus pulchellus* complex from Peninsular Malaysia and multiple instances of convergent adaptation to limestone forest ecosystems. *Zootaxa* 4105: 401-429.

Grismer, L. L., Evan S. et al. 2016. Dragons in the mist: three new species of *Pseudocalotes* Fitzinger (Squamata: Agamidae) from the sky island archipelago of Peninsular Malaysia. *Zootaxa* 4136: 461-490.

Grismer, L. L., Perry L. Wood Jr., et al. 2016. On the taxonomy and phylogeny of the skinks *Lipinia sekayuensis* Grismer, Ismail, Awang, Rizal, & Ahmad and *Lipinia surda* Boulenger from Peninsular Malaysia. *Zootaxa* 4147: 059-066.

Grismer, L. L., Perry L. Wood Jr., et al. 2016. Out of Borneo, again and again: biogeography of the Stream Toad genus *Ansonia* Stoliczka (Anura: Bufonidae) and the discovery of the first limestone cave-dwelling species. *Biological Journal of the Linnean Society*.

Guevara-Carrizales, A.A., **A. Peralta-García, J.H. Valdez-Villavicencio, C.R. Mahrtdt**, and **G. Ruiz-Campos**. 2016. Confirmation of the presence of *Microtus californicus* in Baja California, Mexico. *Western North American Naturalist* 76(4):493-496.

Guevara-Carrizales, A.A., **G. Ruiz-Campos, J. Escobar-Flores**, and R. Martínez-Gallardo. 2016. Mamíferos terrestres de las ecorregiones áridas del estado de Baja California. Pp. 63-90 In *Riqueza y Conservación de los Mamíferos en México a Nivel Estatal* (M. Briones-Salas, Y. Hortelano-Moncada, G. Magaña-Cota, G. Sánchez y J.E. Sosa-Escalante, eds.). Instituto de Biología, Universidad Nacional Autónoma de México, Asociación Mexicana de Mastozoología A.C. y Universidad de Guanajuato, Ciudad de México, México.

Guevara-Carrizales, A.A., **A. Peralta García, J.H. Valdez- Villavicencio, C.R. Mahrtdt**, and **G. Ruiz-Campos**. 2016. Confirmation of the presence of *Microtus californicus* in Baja California, México. *Western North American Naturalist* 76(4): 493-496.

Guimarães-Costa, A., M. Vallinoto, T. Giarrizzo, A. Angulo, **G. Ruiz-Campos**, H. Schneider, and I. Sampaio. 2017. Exploring the molecular diversity of Eleotridae (Gobiiformes) using mitochondrial DNA. *Journal of Applied Ichthyology* DOI: 10.1111/jai.13266.



Luz, 2016. Microsatellite genetic diversity and phylogeography in relation to mating systems in the columnar cactus *Pachycereus pringlei* (Cactaceae). *Perspectives in Plant Ecology, Evolution and Systematics* 22: 1-10. <http://dx.doi.org/10.1016/j.ppees.2016.06.003>.

Hargrove, L., and P. Unitt. 2017. Poor reproductive success of Gray Vireos in a declining California population. *Journal of Field Ornithology* 88(1): 16-29.

Harper, A., E. Mellink, S. Tremor and S. Vanderplank. 2017. Rediscovery of a high-altitude vole, *Microtus californicus huperuthrus*, in Baja California, Mexico. *Southwestern Naturalist* 61(4).

Harvey, M.B., O'Connell, K.A., E. Wostl, A. Riyanto, N. Kurniawan, E.N. Smith, and L.L. Grismer. 2016. Redescription of *Cyrtodactylus lateralis* (Werner) (Squamata: Gekkonidae) and phylogeny of the prehensile-tailed *Cyrtodactylus*. *Zootaxa* 4107: 517-540.

Hedin, M., M. McCormack. 2017. Biogeographic evidence for common vicariance and rare dispersal in a southern Appalachian harvestman (Sabaconidae, *Sabacon cavicolens*). *Journal of Biogeography*, DOI: 10.1111/jbi.12973

Heitz, B. B., Arvin C. Diesmos, Elyse S. Freitas, Elyse D. Elsworth, L. L. Grismer, Anchalee Aowphol, Rafe M. Brown, and Cameron Siler. 2016. A New Supple Skink, Genus *Lygosoma* (Reptilia: Squamata: Scincidae), from the Western Philippines. *Herpetologica* 72: 352-361.

Holen, S.A., T.A. Deméré, D.C. Fisher, R. Fullagar, J.B. Paces, G.T. Jefferson, J.M. Beeton, R.A. Cerutti, A.N. Roundtree, L. Vescera, and K.A. Holen. 2017. A 130,000-year-old archaeological site in southern California, USA. *Nature* 544: 479-483.

Hollingsworth, B.D., and A. Thomson. 2016. Geographic Distribution: *Podarcis sicula* (Italian Wall Lizard). *Herpetological Review* 47: 424

Hollingsworth, B.D., and L. L. Walsh. 2016. *Lampropeltis californiae* (California Kingsnake). Diet/Oophagy. *Herpetological Review* 47: 684.

Hollingsworth, B.D., J.H. Valdez-Villavicencio, and A. Peralta-García. 2016. Geographic Distribution: *Coluber lateralis* (Colubridae). *Revista Mexicana de Herpetología* 2: 40.

Hollingsworth, B.D., J. H. Valdez-Villavicencio, P. Galina-Tessaro, C.R. Mahrdrdt, and M.A. Stepek. 2016. *Masticophis fuliginosus* (Cope, 1895). Diet. *Mesoamerican Herpetology* 3: 746-748.

Jiménez, M. L. J. E. Berrian, D. Polotov and C. Palacios-Cardiel. 2017. Description of *Califorctenus*, a new arid spider genus (Araneae, Ctenidae, Cteninae) of Mexico. *Zootaxa* 4238(1):097-108.

Kanchi, D.A., E.V. Wehncke, X. López-Medellín. 2017. Implicaciones socio-económicas y ambientales derivadas de la producción de peces en la cuenca del Amacuzac, Morelos, México. IX Seminario Internacional Del Uso Integral Del Agua Y XIII Congreso Internacional De Ingeniería Hidráulica, La Habana, Cuba, Marzo 2017.

Kelly, T.S. and P. C. Murphey. 2016. Mammals from the earliest Uintan (middle Eocene) Turtle Bluff Member, Bridger Formation, southwestern Wyoming, USA, Part 1: Primates and Rodentia: *Palaeontologia Electronica*, v. 19.2.27A, pp. 1-55.

Klimova, A.; J. Hoffman; J. Gutiérrez-Rivera; J. L. León de la Luz; A. Ortega-Rubio. 2017. Molecular genetic analysis of two relict desert palm genera, *Washingtonia* and *Brahea*, from the Baja California peninsula and Guadalupe Island. *Ecology and Evolution*. DOI: 10.1002/ece3.3036.

Kienle, S.S, and A. Berta. 2016. The better to eat you with: The comparative feeding morphology of phocid seals (Pinnipedia: Phocidae). *Journal of Anatomy* 228: 396-413.

Kus, B., S. L. Howell, and D. A. Wood. 2017. Female-biased sex ratio, polygyny, and persistence in the endangered Southwestern Willow Flycatcher (*Empidonax traillii extimus*). *The Condor* 119:17-25.

Lara-Resendiz, R.A., Y. Ramírez-Enríquez, I. Valle-Jiménez, J.H. Valdez-Villavicencio, F.R. Mendez-De la Cruz, and P. Galina-Tessaro. 2017. *Elgaria multicarinata* Diet. *Natures Notes. Mesoamerican Herpetology* 4(2): 417-418.

Lara-Resendiz, R.A., B. Larrain-Barríos, and J.H. Valdez-Villavicencio. 2017. *Hemidactylus turcicus* Geographic Distribution. *Natures Notes. Mesoamerican Herpetology* 4(1): 198-199.

Leavitt, D.H., A.B. Marion, Hollingsworth, B.D., and T.W. Reeder. 2017. Multilocus phylogeny of alligator lizards (*Elgaria*, Anguillidae): Testing mtDNA introgression as the source of discordant molecular phylogenetic hypotheses. *Molecular Phylogenetics and Evolution* 110: 104-121.

León de la Luz, J.L.; A. Medel Narváez; R. Domínguez Cadena. 2017. A new species of *Bursera* (Burseraceae) from the East Cape Region in Baja California Sur, Mexico. *Acta Botánica Mexicana* 118: 97-103.

Long, K.L., D.R. Prothero, and V.J.P. Syverson. 2016. Stasis in Rancho La Brea black vultures (*Coragyps occidentalis*) over the last glacial-interglacial cycle. *New Mexico Museum of Natural History Bulletin* 74: 121-125.

López-Acosta, D., P. Galina-Tessaro, J.H. Valdez-Villavicencio, and A. Peralta-García. 2016. Nuevos registros de *Sceloporus licki* (Lacertilia: Phrynosomatidae) en la Región del Cabo, Baja California Sur, México 2(1): 31-36.

López-Medellín, X., L.B. Vázquez, D. Valenzuela-Galván, E.V. Wehncke, B. Maldonado-Almanza, and L. Durand-Smith. 2017. Percepciones de los habitantes de la Reserva de la Biosfera Sierra de Huautla: hacia el desarrollo de nuevas estrategias de manejo participativo. *Interciencia* 42(1): 8-16.

Madan, M., D.R. Prothero, and V.J.P. Syverson, 2016. Stasis in barn owls from the La Brea tar pits during the last glacial-interglacial cycle. *New Mexico Museum of Natural History Bulletin* 74: 153-157.

Mahrdrdt, C.R. 2016. Springs and Seeps. In: L.L.C. Jones, K.J. Halama, and R.E. Lovich (eds.) *Habitat Management Guidelines for Amphibians and Reptiles of the Southwestern United States*. Partners in Amphibian and Reptile Conservation, Technical Publication HMG-5, Birmingham, Alabama. pp. 142-144.

Marschalek, D.A., D.K. Faulkner, and D.H. Deutschman. 2017. Livestock grazing shapes the vegetation structure and subsequent habitat use by the endangered skipper *Pyrgus ruralis lagunae*. *Environmental Entomology* 46(3): 445-453.

Matsui, M., Koshiro Eto, Kanto Nishikawa, Amir Hamidy, Daicus Belabut, Norhayati Ahmad, Somsak Panha, Wichase Khonsue, and L. Lee Grismer 2017. Mitochondrial Phylogeny of *Leptolalax* From Malay Peninsula and *Leptobrachella* (Anura, Megophryidae). *Current Herpetology* 36: 11-21.

Mauseth, J.D., J.P. Reberman, and S. Rodrigues Machado. 2016. Extrafloral nectaries in cacti. *Cactus and Succulent Journal* (US) 88: 156-171.

Maya-Morales, J., M. L. Jiménez and G. Murugan. 2017. Four new genera of funnel-web spiders (Araneae: Agelenidae) from the Baja California Peninsula in Mexico. *Journal of Arachnology* 45(1) 30-66.

Maya-Morales, J. and M. L. Jiménez. 2017. Revision of the funnel-web spider genus *Novaleña* Chamberlin & Ivie 1942 (Araneae:Agelenidae). *Zootaxa*. 4262(1):001-088.

McGann, M., S.W. Starratt, C.L. Powell, II, and D.G. Bieling, 2016. Use of mussel casts for archaeological sites as paleoecological indicators: an example from CA-MAR-254, Marin County, Alta California. *California Archaeology* 8(1):63-90.

Miller, D. M., R.E. Reynolds, G.A. Phelps, J. Honke, A.J. Cyr, D.C. Buesch, K.M. Schmidt, G. Losson, 2017. Active tectonics of the northern Mojave Desert: the 2017 Desert Symposium field trip road log, In: R. E. Reynolds (ed.) *California State University, Desert Studies Consortium, Desert Symposium Volume*: p. 7-44.

Murphey, P.C., and Kelly, T.S. 2017. Small mammals from the earliest Uintan (middle Eocene) Turtle Bluff Member, Bridger Formation, Wyoming. Part 2: Cimolesta, Lipotyphla, Condylarthra, Equidae, Hyracodontidae and Oromerycidae: *Palaeontologia Electronica*, v. 20.1.29A, pp. 1-51.

Murphey, P.C., Townsend, K.E.B., Friscia, A.R., Westgate, J., Evanoff, E., and Gunnell, G.F., 2017. Paleontology and stratigraphy of middle Eocene rock units in the southern Green River and Uinta Basins, Wyoming and Utah: *Geology of the Intermountain West*, v. 3, pp. 1-53.

Mustelin, T. and L.G. Crabo. 2015. Revision of the genus *Aseptis McDunnough* (Lepidoptera, Noctuidae, Noctuinae, Xylenini) with a description of two new genera, *Paraseptis* and *Viridiseptis*. *ZooKeys*, 527: 57-102.

Nur Johana, A. M. Muzzneena, L. L. Grismer, and A. Norhayati. 2016. Species composition, diversity and relative abundance of amphibians in forests and non-forest habitats on Langkawi Island, Peninsular Malaysia. <http://dx.doi.org/10.1063/1.4966873>.

Nur Amalina Mohd Isam, Amirrudin Ahmad, **L. Lee Grismer**, Ahmad Nazri Saidin, Shukor Md. Nor, and Norhayati Ahmad. 2016. Species composition and richness of amphibians in logged forests at Hulu Terengganu, Peninsular Malaysia. <http://dx.doi.org/10.1063/1.4966872>.

Ortiz-Medina, J.A. and **J.H. Valdez-Villavicencio**. 2016. *Norops sericeus*. Kyphosis and scoliosis. *Nature Notes. Mesoamerican Herpetology* 3(3): 725-726.

Pauwels, O. S.G. and **L. Lee Grismer**. 2016. First documented record of the Long-tailed Ringneck *Gongylosoma longicauda* (Squamata: Colubridae) in Thailand. *Russian Journal of Herpetology* 23: 239-242.

Pauwels, O. S. G. and **L. Lee Grismer**. 2016. A review of *A Photographic Field Guide to the Amphibians and Reptiles of the Lowland Monsoon Forests of Southern Vietnam*. *Herpetological Review* 47: 700-701.

Peinado, M., J.L. Aguirre, F. Ocaña-Peinado, and **J. Delgadillo**. 2016. A phytosociological survey of the halophytic vegetation of North America's temperate-boreal Pacific coast. *Phytocoenologia* 46(4): 357-382.

Peralta-García, A., D.H. Leavitt, **B.D. Hollingsworth**, and **T.W. Reeder**. 2016. The phylogenetic position of the Little Mexican Toad, *Anaxyrus kelloggi*, using molecular data. *Journal of Herpetology* 50: 471-475.

Pío-León J.F., F. Delgado-Vargas, **J.L. León-de la Luz**, A. Ortega-Rubio. 2017. Prioritizing wild edible plants for potential new crops based on deciduous forest traditional knowledge by a rancher community. *Botanical Sciences* 95 (1): 1-13.

Pío-León, J.F., F. Delgado-Vargas, B. Murillo-Amador, **J.L. León de la Luz**, R. Vega Aviña, A. Nieto-Garibay, M. Córdoba Matson, A. Ortega Rubio. 2017. Environmental traditional knowledge in a natural protected area as the basis for management and conservation policies. *Journal of Environmental Management* 201: 63-71. <http://dx.doi.org/10.1016/j.jenvman.2017.06.032>.

Prothero, D.R. 2016. *Giants of the Lost World*. Smithsonian Books, Washington, D.C., 174 pp.

Prothero, D.R. 2016. *The Princeton Field Guide to Prehistoric Mammals*. Princeton University Press, Princeton, NJ, 240 pp.

Prothero, D.R. 2016. *California's Amazing Geology*. CRC/Taylor & Francis, Boca Raton, FL, 470 pp.

Prothero, D.R., 2016. A new genus of hesperhyine peccary (Artiodactyla: Tayassuidae) from the late Oligocene of Oregon. *New Mexico Museum of Natural History Bulletin* 74: 205-211.

Prothero, D.R., and C. Lubar. 2016. Fossil camels from the late Oligocene Eastlake Local Fauna, Otay Formation, San Diego County, California. *New Mexico Museum of Natural History Bulletin* 74: 213-221.

Prothero, D.R., A. Bondarev, and T. Callahan. 2016. Bad anatomy: Do the mysterious Rhodope Skull and Adygea Skulls Belong to Aliens? *Skeptical* 21(4): 15-19.

Prothero, D.R., V. Syverson, et al. 2016. Bergmann's rule, geographic clines and speciation: the view from the La Brea tar pits, in Allmon, W., and M. Yacobucci (eds.) *Species and Speciation in the Fossil Record*, p. 389-404.

Prothero, D.R. 2016. Area 51: What's really going on in there? pp. 146-154, in Stollznow, K., ed., *Would You Believe It? Mysterious Tales from the People You'd Least Expect*.



Quah, E. S. H., **L. L. Grismer**, et al. 2017. A new species of Mud Snake (Serpentes, Homalopsidae, *Gyiophis* Murphy & Voris, 2014) from Myanmar with a first molecular phylogenetic assessment of the genus. *Zootaxa* 4238:571-582.

Rebman, J. P., **S. Vanderplank**, B. T. Wilder, X. P. Pnce González and R. Thompson Fitch. 2016. Plants Appendix (pp. 72-105) in Vanderplank S., B. T. Wilder, E. Ezcurra. 2016. *Arroyo la Junta: Una joya de biodiversidad en la Reserva de la Biosfera Sierra La Laguna/A biodiversity jewel in the Sierra La Laguna Biosphere Reserve*. Botanical Research Institute of Texas, Next Generation Sonoran Desert Researchers, and UC MEXUS. 159 pp.

Redmond-Jones, Beth. 2016. Bilingual Multimedia in Exhibitions. *Exhibition* 35(2): 80-86.

Reynolds, Robert E., 2017. A review of latest Oligocene – earliest Miocene floras of the Mojave Block, 2017. In: R. E. Reynolds (ed.) California State University, Desert Studies Consortium, Desert Symposium Volume: P. 93-96 .

Reynolds, Robert E., 2017. The first Pacific Coast record of *Erethizon kleini* (Hystricomorpha, Erethizontidae), 2017. In: R. E. Reynolds (ed.) California State University, Desert Studies Consortium, Desert Symposium Volume: 244-250

Reynolds, Robert E., 2017. Review of the Blancan / Irvingtonian transition in the northern Peninsular Range Province of southern California, In: R. E. Reynolds (ed.) California State University, Desert Studies Consortium, Desert Symposium Volume: 251-256.

Reyes, J., J. Melhado, **E.V. Wehncke**. 2016. Agua Subterránea y Ecosistemas: Hacia una perspectiva holística de sus papeles funcionales. Qué sabemos y qué falta aún por conocer. *Revista Latino Americana de Hidrogeología*. Número Especial 10(1): 345-351.

Richmond, J. Q., **D. A. Wood**, M. F. Westphal, A. G. Vandergast, A. D. Leaché, L. R. Saslaw, H. S. Butterfield, and R. N. Fisher. 2017. Persistence of historical population structure in an endangered species despite near-complete biome conversion in California's San Joaquin Desert. *Molecular Ecology* 26:3618-3635.

Richmond, J. Q., **D. A. Wood**, K. E. Swain, R. N. Fisher, and A. G. Vandergast. 2016. Historical barriers prevent ring like genetic continuity throughout the distribution of the threatened Alameda striped racer (*Masticophis lateralis euryxanthus*). *Herpetologica*, 72: 202-213.

Roeder, M.A. and **T.A. Deméré**. 2017. First report of middle Pleistocene (Irvingtonian) terrestrial megafauna from the Brawley Formation, Superstition Hills, Imperial County, California. In: R.E. Reynolds (ed.) ECSZ Does It: Revisiting the Eastern California Shear Zone. California State University Desert Studies Center, 2017 Desert Symposium Field Guide and Proceedings. pp. 255-257.

Rosel, P., **A. Berta**, et al. 2017. A review of genetic markers and analytical approaches that have been used for delimiting marine mammal subspecies and species. *Marine Mammal Science Spec. Publ.* 33: 56-75.

Ruiz-Campos, G., and A. Varela-Romero. 2016. *Oncorhynchus mykiss nelsoni* (Evermann, 1908). Pages 221-224. En: *Los peces dulceacuicolas de México en peligro de extinción* (G. Ceballos, E. Díaz-Pardo, L. Martínez-Estévez and H. Espinosa-Pérez, eds.). Fondo de Cultura Económica, México, D.F.

Ruiz-Campos, G., and A. Varela-Romero. 2016. *Gasterosteus aculeatus* Linnaeus, 1758. Pages 381-383. En: *Los peces dulceacuicolas de México en peligro de extinción* (G. Ceballos, E. Díaz-Pardo, L. Martínez-Estévez and H. Espinosa-Pérez, eds.). Fondo de Cultura Económica, México, D.F.

Ruiz-Campos, G., C.A. Reyes-Valdez, F. Camarena-Rosales, and A.F. González-Acosta. 2016. Relaciones biométricas comparativas de peso y longitud y longitud-longitud entre la trucha dorada mexicana (*Oncorhynchus chrysogaster*) y otras truchas nativas del noroeste de México. Chap. 7, Pp. 87-95. In *La trucha dorada mexicana* (A. Ruiz-Luna y F.J. García-De León, eds.). CIAD-CONACyT-CIB, México.

Ruiz-Campos, G., and G. De León-Girón. 2017. Registro del Colimbo Pacífico (*Gavia pacifica*) en el Parque Nacional Sierra de San Pedro Mártir, Baja California, México. *Huitzil* 18(1):11-15.

Ruiz-Campos, G., M. Rodríguez-Meraz, G. López, J. Alaníz-García, and A.A. Guevara-Carrizales. 2017. Densidad y composición poblacional del borrego cimarrón (*Ovis canadensis*) y su relación con el hábitat en el noroeste de Baja California (Cañada Jaquejel y Arroyo Grande), México. Pp. 40-55 In *Estudios sobre el borrego cimarrón en el Noroeste de México* (R. Eaton-González, A.A. Guevara-Carrizales, and J.C. Tapia-Mercado, coords.). Libro LX Aniversario de la Universidad Autónoma de Baja California, Mexicali, B.C.

Sasson, A. 2017. The Faunal Remains from Horse Creek Ridge (CA-SDI-682D and HCRMon-S-1), edited by S. Wade. Report on File at Heritage Resources, San Diego, CA.

Sasson, A. 2017. Zooarchaeological and Taphonomic Study of Vertebrate Remains from MCB Camp Pendleton Site (CA-SDI-21805), edited by T. Wahoff. Report on File at AECOM, San Diego, CA.

Silva-Bejarano, C. y P.P. Garcillán. 2016. Variabilidad temporal de la producción de praderas de zacate buffel (*Cenchrus ciliaris* L.) en regiones áridas. *Ecosistemas y Recursos Agropecuarios* 3(9): 357-366.

Simpson, M.G. and J. Rebman. 2016. *Checklist of the Vascular Plants of Mission Trails Regional Park, San Diego, California*. Third edition. Rynchos Press, San Diego, CA. 36 pp.

Starrett, J., Derkarabetian S, M Hedin, RW Bryson Jr., JE McCormack, BC Faircloth 2016. High phylogenetic utility of an Ultraconserved element probe set designed for Arachnida. *Molecular Ecology Resources* DOI: 10.1111/1755-0998.1262

Steadman, D. W., H. M. Singleton, K. M. Delancy, N. A. Albury, J. A. Soto-Centeno, H. Gough, N. Duncan, J. Franklyn, and W. F. Keegan. 2017. Late Holocene Historical Ecology: The Timing of Vertebrate Extirpation on Crooked Island, Commonwealth of The Bahamas. *The Journal of Island and Coastal Archaeology*, 0(0), 1-13. Online Early: <http://dx.doi.org/10.1080/15564894.2017.1305469>

Soleglad, M.E., V. Fet, M.R. Graham, and R.F. Ayrey. 2016. *Graemeloweus*, a new scorpion genus from northern California, USA (Scorpiones: Vaejovidae). *Euscorpius* 227: 1-38.

Soto-Centeno, J. A., N. B. Simmons, and D. W. Steadman. 2017. The bat community of Haiti and evidence for its long-term persistence at high elevations. *PLoS ONE*, 12(6), e0178066.

Sumarli, A., L. L. Grismer, et al. 2016. The first riparian skink (Genus: *Sphenomorphus* Strauch, 1887) from Peninsular Malaysia and its relationship to other Indochinese and Sundaic species. *Zootaxa* 4173: 029-044.

Sumarli, A. and L. L. Grismer 2016. *Sphenomorphus praesignis* (Blotched Forest Skink). *Herpetological Review* 47.

Thy, N., L. L. Grismer, Hun Seiha and Phan Channa 2015. New herpetofauna records and range extensions for *Daboia siamensis* (Smith, 1971) and *Gekko petricolus* Taylor, 1962 from Cambodia. *Cambodian Journal of Natural History* 2: 172-182.

Valdez-Villavicencio, J.H., A. Peralta-García, P. Galina-Tessaro, and Hollingsworth, B.D. 2016. Notes on the reproduction of the Southwestern Pond Turtle *Emys pallida* in Baja California, México. *Revista Mexicana de Herpetología* 2: 36-39.

Valdez-Villavicencio, J.H., Hollingsworth, B.D., and R. Aguilar Jr. 2017. Geographic Distribution: *Hemidactylus turcicus* (Linnaeus, 1758). *Mesoamerican Herpetology* 4(2): 458-459.

Vandergast, A. G., D. B. Weissman, D. A. Wood, D. C. F. Rentz, C. Bazelet, and N. Ueshima. 2017. Tackling an intractable problem: Can greater taxon sampling help resolve relationships within the Stanopelmatoidea (Orthoptera: Ensifera)? *Zootaxa* 4291: 1-33.

Vanderplank, S., A. Peralta García, J. Valdez Villavicencio and C. A. de la Rosa. 2017. *Plantas y Animales Únicos de las islas de Baja California/ Unique Plants and Animals of the Baja California Islands*. Botanical Research Institute of Texas. 136 p.

Varela-Romero, A., G. Ruiz-Campos, and A.F. Guzmán. 2016. *Aqosia chrysoqaster*. Girard, 1856. Pages 104-106. En: *Los peces dulceacuicolas de México en peligro de extinción* (G. Ceballos, E. Díaz-Pardo, L. Martínez-Estévez and H. Espinosa-Pérez, coords.). Fondo de Cultura Económica, México, D.F.

Varela-Romero, A., and G. Ruiz-Campos. 2016. *Gila ditaenia* Miller, 1945. Pages 145-147. En: *Los peces dulceacuicolas de México en peligro de extinción* (G. Ceballos, E. Díaz-Pardo, L. Martínez-Estévez and H. Espinosa-Pérez, eds.). Fondo de Cultura Económica, México, D.F.

Varela-Romero, A., and G. Ruiz-Campos. 2016. *Gila intermedia* (Girard, 1856). Pages 148-149. En: *Los peces dulceacuicolas de México en peligro de extinción* (G. Ceballos, E. Díaz-Pardo, L. Martínez-Estévez and H. Espinosa-Pérez, eds.). Fondo de Cultura Económica, México, D.F.

Varela-Romero, A., and G. Ruiz-Campos. 2016. *Gila robusta* Baird y Girard, 1853. Pages 153-155. En: *Los peces dulceacuicolas de México en peligro de extinción* (G. Ceballos, E. Díaz-Pardo, L. Martínez-Estévez and H. Espinosa-Pérez, eds.). Fondo de Cultura Económica, México, D.F.

Varela-Romero, A., and G. Ruiz-Campos. 2016. *Catostomus cahita* Siebert y Minckley, 1986. Pages 175-176. En: *Los peces dulceacuicolas de México en peligro de extinción* (G. Ceballos, E. Díaz-Pardo, L. Martínez-Estévez and H. Espinosa-Pérez, eds.). Fondo de Cultura Económica, México, D.F.

Varela-Romero, A., G. Ruiz-Campos, and D.A. Hendrickson. 2016. *Catostomus insignis* Baird y Girard, 1854. Pages 178-180. En: *Los peces dulceacuicolas de México en peligro de extinción* (G. Ceballos, E. Díaz-Pardo, L. Martínez-Estévez and H. Espinosa-Pérez, eds.). Fondo de Cultura Económica, México, D.F.

Varela-Romero, A., G. Ruiz-Campos, and D.A. Hendrickson. 2016. *Catostomus leopoldi* Siebert y Minckley, 1986. Pages 180-182. En: *Los peces dulceacuicolas de México en peligro de extinción* (G. Ceballos, E. Díaz-Pardo, L. Martínez-Estévez and H. Espinosa-Pérez, eds.). Fondo de Cultura Económica, México, D.F.

Varela-Romero, A., G. Ruiz-Campos, and S.P. Platania. 2016. *Catostomus wigginsj* Herre y Brock, 1936. Pages 185-187. En: *Los peces dulceacuicolas de México en peligro de extinción* (G. Ceballos, E. Díaz-Pardo, L. Martínez-Estévez and H. Espinosa-Pérez, eds.). Fondo de Cultura Económica, México, D.F.

Velazco, P. M., J. A. Soto-Centeno, D. W. Fleck, R. S. Voss, and N. B. Simmons. 2017. A New Species of Nectar-feeding Bat of the Genus *Hsunycteris* (Phyllostomidae: Lonchophyllinae) from Northeastern Peru. *American Museum Novitates*, (3881), 1-26.

Welton, W.J., Cameron D. Siler, L. L. Grismer, Arvin C. Diesmos, Jack W. Sites and Rafe M. Brown. 2016. Archipelago-wide survey of Philippine forest dragons (Agamidae: *Gonocephalus*): multilocus phylogeny uncovers unprecedented levels of genetic diversity in a biodiversity hotspot. *Biological Journal of the Linnean Society*.

Wehncke, E.V. 2016. Los grandes riesgos: la invisibilidad y el desconocimiento sobre el funcionamiento y papel fundamental de las aguas subterráneas. In: O. Escolero, H. Garduño, S. Foster, C. Gutiérrez, F. Izaza, R. Hirata, E.V. Wehncke (eds.). Desarrollo, Conservación y Remedación del Agua Subterránea en América Latina: Guías para la formulación de políticas públicas y preparación de proyectos. World Bank, IMTA CAF.

Wheeler WC, M Hedin, et al. 2016. The spider tree of life: phylogeny of Araneae based on target gene analyses from an extensive taxon sample. *Cladistics*, (2016) 1-43.

Wood Jr., P. L., L. L. Grismer, et al. 2017. Three new karst-dwelling *Cnemaspis* Strauch, 1887 (Squamata: Gekkonidae) from Peninsular Thailand and the phylogenetic placement of *C. punctatouchalis* and *C. vandeventeri*. PeerJ, DOI 10.7717/peerj.2884

Wood, D. A., T. D. Bui, C. T. Overton, A. G. Vandergast, M. L. Casazza, J. M. Hull, and J. Y. Takekawa. 2017. A Century of Landscape Disturbance and Urbanization of the San Francisco Bay Region affects the Present-day Genetic Diversity of the California Ridgway's Rail (*Rallus obsoletus obsoletus*). *Conservation Genetics* 18:131-146.

Bold indicates Museum research associates.

Underline indicates Museum staff members.

Thank You | July 1, 2016–June 30, 2017

We are deeply grateful to the many donors who supported the Museum this year through new gifts and pledge payments.

\$100,000 and above

City of San Diego Commission for Arts and Culture
Carol and Henry F. Hunte Fund 🍷
Institute of Museum and Library Services
Candeo Fund at the International Community Foundation at the recommendation of Christy Walton
J. W. Sefton Foundation
Estate of Virginia W. Martin
The Gilbert J. Martin Foundation
Price Philanthropies Foundation
Mrs. Christy Walton
The Walton Family Foundation at the recommendation of Christy Walton
Dennis and Carol Wilson

\$50,000-\$99,999

Mona Baumgartel and John DeBeer
Mr. and Mrs. John Downing
Downing Family Foundation
The Joan and Irwin Jacobs Fund of the Jewish Community Foundation
JiJi Foundation Fund at the International Community Foundation
Patrons of the Prado
The Rice Family Foundation

\$10,000-\$49,999

Anonymous
Thomas C. Ackerman Foundation
Mrs. Alice Anda and Mr. James Ward
Bank of America
Bank of America Foundation
The Bravo Foundation
Mr. and Mrs. Gregory Bullard
Roberta and Malin Burnham
Ms. Anita Busquets and Dr. William A. Ladd
Carolyn and Steven Conner
Conner Family Fund 🍷
County of San Diego
Mr. and Mrs. James M. Dort
H. Glenn Dunham
Bernard J. Eggertsen and Florence Nemkov
Ellen Browning Scripps Foundation
Dr. and Mrs. Laurence D. Favrot

The Favrot Fund
Dr. and Mrs. Frank J. Goicoechea
Ms. Allison Henderson and Dr. Jay Miles
The Hervey Family Fund 🍷
Institute for Law and Systems Research
James Hervey Johnson
Charitable Educational Trust
Peter and Marilee Kovacs
Mandell Weiss Charitable Trust
Mr. and Mrs. Richard D. Murphy
National Foundation for Autism Research
National Geographic Society
National Science Foundation
Rand and Elaine Newman
Qualcomm, Incorporated
Rancho Santa Ana Botanic Garden
ResMed Foundation
Susan and Bryce Rhodes Family
Mr. and Mrs. Frank Rogozienski
San Diego Gas & Electric
Harley and Maryanne Sefton
Dr. Seuss Foundation at the request of Audrey Geisel 🍷
Subaru of America, Inc.
WWW Foundation
Walter J. and Betty C. Zable Foundation

\$5,000-\$9,999

J.F. Beyster Fund 🍷
M.A. Beyster Fund II 🍷
American Education Endowment, SBC Fund at the recommendation of Laura Bond and Patrick Sewall
Ms. Debbie Fritsch and Mr. Pat Boyce
Boys and Girls Foundation
Estate of Esther J. Burnham
Carolyn and Cliff Colwell
Ms. Courtney Coyle and Mr. Steven McDonald
Cox Cares Fund 🍷
Mr. and Mrs. James Dawe
Bill Disher
Ms. Marion M. Eggertsen
Hattie Ettinger Conservation Fund at the recommendation of Janie DeCelles 🍷
Lois and John Harris Trust Fund
John H. and Vickie L. Harris
Heller Foundation of San Diego
Ann Laddon and Adrian Jaffer
Ms. Silke Laqua and Mr. Jason Shidler
Mr. and Mrs. Anthony* Mercieca


Merck Partnership for Giving
Merrill Lynch
The Munn Family Foundation, Inc.
The Kenneth T. and Eileen L. Norris Foundation
Orca Fund at the request of Paul Eichen 🍷
Dr. Rebecca Papendick and Dr. Jay Savage
Pfizer Foundation Matching Gifts Program
Allison and Robert Price
Family Foundation Fund
Mr. and Mrs. James S. Riley
Richard C. Schwenkmeyer
The Wells Fargo Foundation

\$2,500-\$4,999


Allergy and Rheumatology Medical Clinic
Mr. and Mrs. Roberto Arjona
Ms. Carol Baird and Dr. Alan Harper
Mr. William Barbour
Jeff Block and Michele Gerus
Ms. Joye Blount and Mr. Jessie J. Knight, Jr.
Henry W. Bull Foundation
Cavignac & Associates
Dr. and Mrs. Roberto A. Cueva
Iris Engstrand
Event Network, Inc.
Samuel I. & John Henry Fox Foundation
The General Atomic Sciences Education Foundation
Judy Gradwohl
Denise and Michael Hager
Mr. and Mrs. Ron Hebdon
Mr. and Mrs. William Herrin
Mr. and Mrs. Michael Hoctor
Gary and Carrie Huckell
Mr. and Mrs. Gary C. Jacobson
Jeanne and Joseph Jehl
Kinder Morgan Foundation
Ms. Mary Rider and Mr. John La Grange
Diana and Lowell Lindsay
Lions Club of San Diego
J. Andrew and Anne W. McCammon Fund 🍷
Dr. Judith T. Muñoz and Dr. Daniel G. Muñoz
Nordson Corporation Foundation
Jean and Bill O'Daniel
Mrs. James B. Orwig
Arthur P. and Jeanette G. Pratt Memorial Fund
Jim and Claudia Prescott

Mrs. Valerie Quate and
Mr. Jim Myers
Rudolph and Carla Rehm
Nancy Robertson and
Mark Cookingham
Mr. and Mrs. Eberhard H. Rohm
Jeanne Shenkman
Dr. and Mrs. Paul Strauss
Strauss Family Foundation
Swantz Trust
Ms. Millie Basden and
Dr. Peter Thomas
Drs. Paul and Ann Tuskes
University of California Riverside
Michael Wall and Allison Teem
Zenith Insurance Co.


\$1,000-\$2,400

Anonymous
Walter and Jody Andersen
Eowyn Bates and
Christopher Croom
Ms. Connie Matsui and
Mr. William Beckman
The Beckman-Matsui Family Fund
at the Rancho Santa Fe
Foundation
Carl Bell
Mr. and Mrs. Jeremy Berg
Dr. and Mrs. Wolfgang Berger
Beyster Family Foundation Fund IV 
Mr. and Mrs. Thomas A. Blackman
Mr. and Mrs. William Buchanan
Susan and Richard Breisch
Dr. J. David Bukry
Mrs. Dinah L. Carl and Mr. Scott E. Carl
Dr. Margaret E. Carl
Charles Schwab
Clark-Hunter Foundation
Ms. Rebecca Vesterfelt and
Mr. Louis Cohen
The Sahan Daywi Foundation
at the request of Christopher
and Mila Conlan
The Covey
Virginia and Doug Crockett
Mrs. Julia Croom
Vice Admiral and
Mrs. Walter J. Davis, Jr.
Lois Day*
Dr. and Mrs. Paul K. Dayton
Carolyn and William Doherty
Dr. and Mrs. L. David Engel
Ms. Anne L. Evans
Mr. and Mrs. William Ferguson
Mr. Tom Fleming
Karen and Steven Garsson
Ms. Charlene Glacy
Mr. and Mrs. Jerry Goodwin
Dr. and Mrs. Robert T. Gordon

Alan and Dorie* Gradwohl
Gray Charitable Trust
Mrs. Doreen Gray
Ms. Kimberly H. Gray
Ms. Marcia Green
Robin Halford
Dr. Barbara Hoenecke and
Dr. Heinz Hoenecke
Joel and Rosanne Holliday
Margaret Hollingsworth
Jackie Hollywood
Nancy and William Homeyer
Ms. Karen Owens and
Mr. George Huling
Ms. Conny Jamison
Martin Kantor
Jessica and Mark Kearney
Peter La Dow
Mike and Carolyn Lee
Ms. Tina Kuhlmann and
Mr. John Lennon
Ms. Vicki Lindblade
Ms. Barbara J. Lohne
Mr. and Mrs. Clark R. Mahrtd
Margelef/Dayton Charitable Fund
at Fidelity Charitable Gift Fund
Mr. and Mrs. Martin Marugg, Jr.
Mr. Michael G. Mathos
Mr. and Mrs. Andrew A. Mauro
Mauro Family Fund at Fidelity
Charitable Gift Fund
Mr. and Mrs. Donald L. Macted
Mrs. Geraldine E. McAllister
Mrs. Elizabeth B. Meyer
Mrs. Judith B. Morgan
Mr. and Mrs. Paul Mosher
Mr. and Mrs. Brys Myers
Dr. James W. Neel
Ms. Nancy Nenow and
Mr. David Dolan
Mrs. Carol Netterblad
Mr. and Mrs. Thomas A. Oberbauer
Dr. and Mrs. Rodney D. Orth
Mr. and Mrs. Raymond J. Paige
Mrs. Joseph R. Parker
Ms. Patricia K. Pastore
and Mr. Thomas Pastore
Beverly Pecunia
Mr. and Mrs. Ralph Pesqueira
Procopio, Cory, Hargreaves
& Savitch LLP
Mr. Philip R. Pryde and
Ms. Alison Cummings
Ms. Janet Rusnell
Ms. Anne Schafer
Warren and Anna Gale Schmidtman
Ms. Anne Schwartz
Mr. and Mrs. Tom Sparrow
Mr. and Mrs. Richard W. Spehn
Dr. and Mrs. John R. Stevenson

Mr. and Mrs. Gaylord Stickney
The Charles H. Stout Foundation
Sam and Barb Takahashi
Takahashi Family Fund 
Mrs. Edna K. Tipton
Christine Tratnyek
Dr. Robert C. Vinton
Bob Wallace
Kathy and Jim Waring
Warren-Neely Foundation
Julie and Kenneth Warren
Mr. and Mrs. Alvin Wood
Dr. Mary M. Yang

\$500-\$999

Ms. Jo Ellen Anderson
Ms. Teri Appelson and
Mr. John Rigby
Ms. Janell Cannon
Mr. and Mrs. Ken Clark
Mr. and Mrs. Tim Considine
Adriane and Ken Coveney
Mr. and Mrs. Stephen DeTommaso
Val and DeeGee Farrell
Ms. Summer Girgis
Drs. Leonard and Barbara Gosink
Ms. Ingegerd E. Hansen
Diana and William Herron
Mr. Joseph Hunt and Mr. Maire Hunt
Mr. and Mrs. Michael Kim
Ms. Janet Klauber and Mr. Jim Melli
Klees Family Fund
Kyocera International, Inc.
Ms. Dawn Lawson
William and Suzann Leininger
Ms. DeEtte L. Loeffler and
Mr. Steven Loeffler
Dr. M. Kimberly Lowe
Alexis Mckee
Christa McReynolds Fund 
Dr. Margaret Meyer and
Mr. Paul Meyer
James and Estelle Milch Fund
Mr. and Mrs. Gary Parker
Mr. Kevin Patrick
Nuri and John Pierce
Maggie Reinbold
and Bradford Hollingsworth
Ms. Abbyann Sisk and
Mr. James Roberts
Dr. and Mrs. Peter Sadori
Mrs. Carol A. Sheehan
Brian J. and Marilyn Z. Smith
Charitable Fund at Fidelity
Charitable Fund
Solana Ranch Elementary School
Annette L. and Wade W. Winner, Jr.
Mrs. Carol Winter
Wright Management and Development
Bradley Zlotnick, M.D.

\$100-\$499

Anonymous
Ms. Theresa B. Acerro
Ms. Paulette D. Ache
Mr. K. A. Achterkirchen
Ms. Jane Sherwood and
Mr. Donald Albright
Dr. and Mrs. Maurice Alfaro
Jayne and D. Scott Atkinson
Ms. Winnie Willis and Mr. Ed Barber
Mr. and Mrs. Ken Barratt
Bruce and Patricia Becker
Benevity Community Impact
Fund - Calgary
Wayne and Lauralee Bennett
Mr. and Mrs. Charles A. Bird
Mr. and Mrs. John G. Blackwell
Mr. and Mrs. Austin Blue
Miles and Patricia Bowler
George and Mary Ann
Brooks-Gonyer
Ms. Sandy Callahan
Megan Callery
Ms. Yee-Ching Chang
Ms. Tina Chase
Mr. John R. Cleator
Dr. and Mrs. Boyd D. Collier
Ms. Nancy Cook and Mr. Brian Cook
Ms. Ramona D. Court
Richard and Stephanie Coutts
Ms. Patricia Cowett
Deanne and Tom Deméré
Mr. James T. Determan
Mr. and Mrs. James C. Dice
Ms. Tajmahal Dirbas
Ms. Penny Borax and Mr. John Donald
Ms. Vivian Donaldson and
Mr. Scott Donaldson
Ms. Margaret N. Dykens
Ms. Boryana Eastman and
Mr. Doug Eastman
Mr. John G. Eger
Mr. and Mrs. Richard Erickson
Ms. Debra Ernst and Ms. Sandra Ernst
Mr. and Mrs. Ben Everitt
Ms. Enid Farrell
Ms. M. Jeanne Faucon-Mooers
The Field Family
Mr. and Mrs. Walker Fillius
Dr. and Mrs. Donald E. Fosket
Mrs. Faiya Fredman
Ms. Denise Garland and
Mr. Michael Cardwell
Mrs. Jacqueline M. Gillman
Hal and Sharon Goforth
Google Grants
Dr. Gary B. Grantham
Bob and Linda Gross

Charitable Foundation
Ms. Erika Harju
Mr. and Mrs. Richard K. Harris
Dr. and Mrs. Jerome L. Heard
Ms. Susan Heller
Ms. Joan Herskowitz
Mr. and Mrs. Jules Hertz
Dr. Robert Heyneman
Mr. David Miles and Dr. David Higgins
Dr. Martha Hillyard and
Dr. Steven Hillyard
Mr. and Mrs. Ron Horvitz
Ms. Evelyn G. Jackson
Dr. Wen Jiang and Mr. Robert Pisor
Mr. Bill Jones and
Ms. Beth Redmond-Jones
Drs. Barbara and Dan Keiller
Ms. Sandra King
Ms. Evelyn W. Klees
Ms. Mariette Kobrak
Mrs. Eva Quesenberry and
Mr. Bernard Kuchta
Ms. Paula Landale
Mr. and Mrs. Theodore R. Larson
Katrice and Vincent Lee
Mr. and Mrs. Stephen Leon
Ms. Lysbeth Lieber
Mrs. Russell Litchfield
Living Coast Discovery Center
Mr. Larry Lovell
Dr. Monte Marshall
Mr. and Mrs. Paul M. Martin
Ms. Judith L. Mathews
Alice McCauley
Mr. and Mrs. Robert B. McCommins
Ms. Renee McLeod and
Mr. James D. Phillips
Mrs. Pat Mearns
Mrs. Janice Meliska and
Mr. Charles Meliska
Ms. Kathleen Mitchell and
Mr. Scott Landis
Mrs. Joanne T. Moore
Ms. Janet M. Morris
Mr. Kenneth Murray and
Mrs. Jill Peck-Murray
Mrs. Marian G. Nelson
John and Virginia Oliver
Mrs. Elizabeth Olsen
Ms. Elizabeth O'Mea
James and Louise O'Neill
Mr. William Orcutt
Dr. and Mrs. Fred Orton
Mr. and Mrs. John P. Overland
Mr. Robert T. Patton
Mr. and Mrs. Mark Perry
Ms. Chena Popper
Mrs. Karen Rado
Jon Rebman and Michael Rood

Mr. and Mrs. James G. Respass
Ms. Michelene Rich
Susan Rick
Ingrid Garcia and Balkys Robles
Ms. Jeanne C. Rosenberg
Betsy and Lea Rudee
Mr. Robert Rutherford
Ms. Ghia Santos
Dr. and Mrs. Murray M. Schacher
Ms. Caron B. Schattel
Mrs. Connie Schroeder
Ms. Florence Sell
Sempra Energy
Ms. Barbara Shramek
Mr. and Mrs. Stanley Siegel
Mr. and Mrs. Lewis Silverberg
Dr. Meg Sutherland-Smith and
Mr. Harry Smith
Ms. Susan E. Smith
Mrs. Christina Schaefer and
Dr. Wayne Spencer
Ms. Carol J. Stadum
Dr. and Mrs. Charles J. Stewart
Ms. Susan Stiver and
Mr. Brian Swanson
Mr. and Mrs. Thomas Swanson
Melvin and Ellen Sweet
Ms. Mitzi K. Swift
Mr. and Mrs. Alan Tarkington
Dr. Catherine A. Tauber
Mrs. Carol Telle
David and Wendy Thomas
Ms. Eloise F. Thomas
Mrs. Ann M. Uri
Ms. Maria Veghte
Mr. Albert G. Verna
Mr. and Mrs. Thomas N. Volle
Mr. and Mrs. W. M. Wadlington
Jim and Penny Ward
Marian Warwick
Mr. and Mrs. Hal Watkins
Mr. and Mrs. David R. Weigel
Ms. Mary Anne Wentink
Mr. and Mrs. Howard Wiggins
Mr. Frank Williamson and
Ms. Patricia Powers Williamson
Mr. and Mrs. Stanley G. Williamson
Mr. and Mrs. Roger D. Wynn
Ann L. Zahner

*Deceased

 The San Diego Foundation

If we have omitted your name or made an error, please accept our appologies and help us correct our records by contacting Megan Callery at 619.255.0359 or mcallery@sdnhm.org.

Special Events Partners

The Museum offers a unique and memorable event venue for many organizations throughout the year. To ensure the success for all events the Museum partners with a group of exclusive preferred vendors who are familiar with the Museum and offer a complete range of services.

Audio Visual - Lighting

ETS Productions Inc.

Catering

Abbey Catering & Event Design
Authentic Flavors Fine
Catering & Events
Coast Catering
Continental Catering, Inc.
Crown Point Catering
Culinary Concepts
Feast On This
Personal Touch Dining, Inc.
Terra Catering
The French Gourmet
The Prado Restaurant at
Balboa Park
Toast Personal Chef &
Catering Services
The Wild Thyme Company

Entertainment

Imagination Entertainment

Floral Design

Third Bloom

Parking Services

Ace Parking Management, Inc.

Rental Equipment

Classic Party Rentals
Raphael's Party Rentals
Pacific Event Productions

Natural Partners

Natural Partners are corporate supporters of the Museum who gave \$1,250 or more in cash, event or products and services support over the course of the year. We are proud to be associated with these organizations and are most appreciative of their generosity.

Biodiversity Champion Natural Partner

KPBS—TV Public Broadcasting **
Subaru of America, Inc.

Desert Natural Partner

CalPacific Marketing Group, Inc.
CerasoliStafford Media
Management LLC **
Simpler & Simpler **

Mountain Natural Partner

ResMed
San Diego Gas & Electric

Chaparral Natural Partner

Abbey Catering & Event Design **
Authentic Flavors Fine
Catering & Events **
Bank of America
Cavignac & Associates **
Coast Catering**
Continental Catering, Inc. **
Cook + Schmid, LLC**
CRG Beverage Company**
Crown Point Catering **
Culinary Concepts **
Feast On This **

First Republic Bank **
The French Gourmet **
Imagination Entertainment **
Lindblad Expeditions **
Personal Touch Dining, Inc.
The Prado Restaurant
at Balboa Park **
Rancho La Puerta**
Rancho Las Cruces**
Regulus Therapeutics **
San Diego Family Housing LLC **
Scott Dunn USA Inc **
Sony Electronics Inc.
Terra Catering**
Third Bloom **
Toast Personal Chef &
Catering Services **
The Wild Thyme Company **

Coast Natural Partner

Ace Parking Management, Inc. **
Classic Party Rentals**
ETS Productions Inc.**
Ferring Research Institute
Nordson Corporation Foundation
One Door North **
Pacific Event Productions **
Procopio, Cory, Hargreaves
& Savitch LLP
Raphael's Party Rentals **
Rely Environmental **
Select Mailing Service, Inc. **
UCSD—Dept of Orthopaedic
Surgery
The WineSellar and Brasserie**

**Indicates gift-in-kind



Gifts-in-kind

Gary James
Robert Jones
Robin Lehman
Rancho La Puerta
Donna Raub
Rely Environmental
REI
April Green

Endowments

Administrative Endowment
Ambassadors Circle Endowment
Joshua L. Baily Endowment
for Marine Invertebrates
and Paleontology
Biodiversity Research Center of
the Californias Director's
Endowment
Mary and Dallas Clark Chair
of Botany
James R. Colclough Paleontology
Endowment
Ruth G. Comstock Entomology
Endowment
Danziger Ornithology Endowment
Dorothy Elliott Museum Access
Fund Endowment
Endowed Chair for the
President & CEO
Groce Natural History Endowment
Fund at the San Diego Foundation
William Randolph Hearst Endowed
Fund for Education Programs
Hill Endowment for
Ornithology Research
Klauber Family Library Endowment
Grace and Laurence Klauber
Herpetology Endowment
Trust of Hallam J. Koons, in memory
of his father, Hallam T. Koons
Herbert N. Lowe
Conchological Collection
Mildred Meeder Endowment Fund
at the San Diego Foundation
Member Science Endowment
San Diego Society of Natural
History General Endowment at
the San Diego Foundation
Topper Thomas Youth Education
Endowment
The Stephen L. Walsh Vertebrate
Paleontology Endowment
W.W. Whitney Library Endowment
Dennis and Carol Wilson Endowed
Chair of Ornithology

Bird Ball

Bird Ball Event Co-Chairs

Anne Bullard
Flaminia Mangone
Demi Rogozienski
Jessica Rohm

Western Tanager Table

Bank of America/Laura
and Rick Bregman
Mona Baumgartel and John DeBeer
Cavignac & Associates
Mary and Jim Dawe
First Republic Bank/Jason Shidler
Kathy and John Hattox
Rancho La Puerta/Deborah Szekely
Frank and Demi Rogozienski
Jessica and Eberhard Rohm
Scott Dunn USA Inc./John Spence
Harley and Maryanne Sefton
Christy Walton
Carol and Dennis Wilson
Zenith Insurance

Peregrine Falcon Couple Tickets

Courtney Coyle and
Steve McDonald
Kathy and Bob Cueva
Janet and Jim Dort
Iris Engstrand
Tom Fleming
Andrea and Frank Goicoechea
Anne and Andy McCammon
Judith and Daniel Muñoz
Ann Laddon and Adrian Jaffer
Claudia and Jim Prescott

Anna's Hummingbird Tickets

Anne and Greg Bullard
Anita Busquets and William Ladd
Janie DeCelles
Denise and Mick Hager
Allison Henderson and Jay Miles
Georganne and Mike Hoctor
KPBS/Julie and Tom Karlo
DeEtte and Steve Loeffler
Flaminia Mangone
Monte Marshall
Marilyn Miles
Elaine and Rand Newman
Irene and Tom Oberbauer
Mrs. James Orwig
Sarah and John Rebelo
Danea and Jim Riley
Nancy Robertson
Jeannie Rosenberg
Dick Schwenkmeyer
Jeanne Shenkman
Bob Vinton
Adriana and Tim Wright
Bradley Zlotnick

Wish List Sponsorship

Anita Busquets and William Ladd
Aliane Wines, a San Diego
based importer
Casamigos Spirits Company
Allison Henderson and Jay Miles
Carla and Rudy Rehm
Harley and Maryanne Sefton
Christy Walton

Contributions

Terri and William Buchanan
Kathy and Bob Cueva
Bill Disher
Andrea and Frank Goicoechea
Judith and Daniel Muñoz
Nancy Robertson
Robert Wallace

Live Auction Sponsors

Continental Catering
Scott Dunn Private Tours
Green Fresh Florals
Charles Koll
La Casa Del Zorro
The Lodge at Torrey Pines
The Nature Conservancy
Rancho La Puerta
Rancho Las Cruces
The Sante Fe Opera
Shafer Napa Valley Wines
St. Anton Condominiums
The Wild Thyme Company
The Wine Sellar Brasserie

In Memoriam

The following individuals represent members, donors, and volunteers who have passed away this fiscal year. We are thankful for their commitment to the Museum and wish to honor their memories.

Joe Ashcroft
Olive Ball
Stephen J. Cohen
Lois Day
Ingegerd E. Hansen
Kathryn Hattox
Walter D. Hofmann
Luisa J. Larson
Lucile Madruga
Alex C. McDonald
Chet Nelson
Philip R. Palisoul
Conrad Prebys
Tom Scott
F. Walter Shaw
James S. Sugg

Live Oaks Society

The Live Oaks Society is comprised of supporters who have made gifts to the Museum through their estate plans.

Anonymous (9)

Marianne K. Adams

Dr. Janet A. Anderson

and Dr. Victor Van Lint

Francoise D. Baker

Dr. Annalisa Berta

Susan and Richard Breisch

George Brooks-Gonyer

Mr. and Mrs. Gregory Bullard

Mrs. Ramona Bush

Ms. Anita Busquets

and Dr. William A. Ladd

Margaret E. Carl

Dale Hollis Clark

Henry and Charlotte* Clark

Jerry Clarkson

Karen and Dr. James F.* Clements

Mr. David R. Crawford

Lois Day*

Jose de la Torre-Bueno

Mona Baumgartel and John DeBeer

Ms. Janie DeCelles

Tom and Deanne Deméré

Mr. and Mrs. James M. Dort

Glenn and Jeanne* Dunham

Bernard J. Eggertsen

Iris and Paul* Engstrand

Meryl Faulkner

Ms. Michele Fergoda

Mrs. William Gordon

Dr. David E. and Barbara Groce

Judy Guilmette*

Dr. and Mrs. Michael Hager

Mr. and Mrs. Enrique Hambleton

Ed and Janelle Harris

Lois and John Harris

Ms. Susan Heller

Dorothy Hester

Mr. and Mrs. Michael Hoctor

Kathleen Howell

Mr. and Mrs. Gary C. Jacobson

Adrian Jaffer

Mr. and Mrs. J. Edwin Jenkins

Dr. Donna Perdue

and Dr. Calvin Johnson

Linda D. King

Janet Klauber and Jim Melli

Ms. Sheri Knox

Catherine O. and Burton* Kuck

H. William Kuni

Ann Laddon

Diana E. Lindsay

Dr. Jack L. Littlepage

Ms. Barbara J. Lohne

Spencer R. Luke

Dr. Monte Marshall

Mr. Jack T. McCord

Mr. and Mrs. Anthony* Mercieca

Judith T. Muñoz

Dr. James D. Nauman

Nancy Nenow

Mrs. Carol Netterblad

Dr. and Mrs. Fred Orton

Walter and Anne* Pagels

Mrs. Joseph R. Parker

James and Barbara Peugh

Rudy and Marilyn Regalado

James K. Richardson

Rich and Harleen Roncaglia

Ms. Ronnie Schneider

Richard C. Schwenkmeyer

Jeanne and Henry* Shenkman

David Dwyer Smith

Dr. and Mrs. John R. Stevenson

Mr. and Mrs. Gaylord Stickney

Phyllis and Frank Tabor

Christine Tratnyek

Drs. Paul and Ann Tuskes

Phil Unitt

Mrs. Gloria Wilkes Van Norman

Dr. Robert C. Vinton

Marian Warwick

Jerry and Shana Wilson

Mrs. Mary M. Yount

*Deceased



In Memoriam | Kathy Hattox

Kathy Hattox, who passed away April 29, 2017, was born in San Diego and raised in Kensington. She graduated from Hoover High School, attended San Diego State University, and graduated from the University of California, Los Angeles. She earned her law degree from University of San Diego and practiced law here in San Diego. Kathy was a longtime member and supporter of the San Diego Natural History Museum, making her first contribution 25 years ago. Her final gift to the Museum was made in honor of the 25-year tenure of Dr. Mick Hager, who spoke at her memorial service at the Old Globe. Kathy was a dedicated champion for Balboa Park and many San Diego institutions. In addition to the Old Globe and the San Diego Natural History Museum, her philanthropy included the San Diego Zoo, the San Diego Museum of Art, the San Diego Opera, and Sharp Memorial Hospital.

Kathy was a woman of wide-ranging interests and accomplishments who embraced adventure, world travel, and fresh challenges throughout her life. Her love of nature and sense of adventure spurred her to journey to some 100 countries over her lifetime, including several trips to Africa and India. Closer to home, she swam in the San Diego Bay, kept active in the life of the San Diego cultural community, and displayed a passion for this region that was an inspiration to many. Kathy was a wonderful example of the Museum's core constituency, someone curious about the natural world who never stopped learning and sharing her excitement for what she learned with others to help protect and preserve the world in which we live.

Board of Directors 2016–2017

Officers

Allison Henderson, **Chair**
(July–December 2016)

Anita Busquets, **Chair**
(January–June 2017)
and **Vice Chair** (July–December 2016)

Karen Garsson, **Vice Chair**
(January–June 2017)
and **At Large** (July–December 2016)

Tom Oberbauer, **Secretary**

Terri Buchanan, **Treasurer**

Directors

Roberto Arjona, **At Large**

Austin Blue

Anne Bullard

Mary Dawe, **At Large**

Paul Dayton, Ph.D.

John DeBeer

John Downing

Tom Fleming

Tom Hazard

Stephen Hill

Georganne Hoxter

Steve Kay, Ph.D.

Kathryn Kim

Diana Lindsay

DeEtte Loeffler

Steve McDonald

Judith Muñoz

Rand Newman

Demi Rogozienski

Jessica Dee Rohm

Jon Schmid

Jason Shidler

Melvin Spiese

Mary Yang, Ph.D.

Trustees Emeriti

Pamela M. Bruder

Dale Clark

Mary H. Clark*

James Clements*

Joan Parker

Norman C. Roberts., DVM*

Harley Sefton

Thomas W. Sefton*

Christy Walton

Carol Wilson

Honorary Trustees

Charmaine* and Maurice* Kaplan

Philip M. Klauber*

Donna K. Sefton*

Richard Schwenkmeyer

Nita and Henk van der Werff

Dennis Wilson

*Deceased

Binational Advisory Board 2016–2017

Enrique Hambleton, **Co-Chair**

Thomas Oberbauer, **Co-Chair**

Eric Anderson

Roberto Arjona

Austin Blue

Richard Cudney

Gustavo Danemann

Iris Engstrand, Ph.D.

Martin Goebel

Alan Harper, Ph.D.

David Herzl

Richard Kiy

Sergio Knaebel

Laura Martínez Ríos

Steven McDonald

Anne McEnany

Tim Means

Jerome Navarra

Rodolfo Ogarrio

James Riley

Jaime Roberts Vildosola

Carolina Shepard Espinoza

Laura Silvan

Melvin Spiese

Drew Talley

Roberto Valdes

Jim Waring

Sula Vanderplank

Mary Yang

Emily Young

Volunteer Officers 2016–2017

Canyoneers

Rochelle Gaudette, **President**

Stacey Vielma, **Vice President**

Docents

Marilyn Miles, **President**

Anita Musser, **Vice President**

Kristen Churchill, **Vice President**

Whalers

Leslie Rapp, **President**

Jim Clevenger, **Vice President**

Covey

Pamela Hartwell, **President**

Julie Johnson Iavelli, **Vice President**

Senior Management 2016–2017

Judy Gradwohl

President and CEO

Eowyn Bates

Vice President, Institutional
Advancement

Susan Loveall

Vice President, CFO, and COO

Michael Wall, Ph.D.

Curator of Entomology
Vice President, Research and
Public Programs

Tom Deméré, Ph.D.

Curator of Paleontology

Bradford Hollingsworth, Ph.D.

Curator of Herpetology

Jon P. Rebman, Ph.D.

Curator of Botany
The Mary and Dallas Clark
Endowed Chair of Botany

Philip Unitt

Curator of Birds and Mammals
The Dennis and Carol Wilson
Endowed Chair of Ornithology

Margaret Dykens

Director of the Research Library
and Registrar

Rebecca Handelsman

Senior Director of Communications

Katrice Lee

Senior Director of Development
and Grants

Beth Redmond-Jones

Senior Director of Public Programs

Ghia Santos

Controller

Acknowledgements

Art Direction and Design

Kate Johnson

Editor in Chief

Rebecca Handelsman

Editorial Committee and Contributors

Eowyn Bates

Margaret Dykens

Judy Gradwohl

Katrice Lee

Janet Morris

Donna Raub

Beth Redmond-Jones

Michael Wall, Ph.D.

Photography

Ben Aquirre, Jim Berrian, Michael Field, April Green, Alan Harper, Jackie Imray, Kate Johnson, Pablo Mason, Mary Lou Morreal, Bob Ross, Robert Rutherford, Jonathan Talbott

Cover photo

Pictured in the midst of a few of the 74,000+ specimens in the Birds and Mammals collection, Phil Unitt, along with our other curators, presides over the precious scientific heritage of The Nat. Since 1874, we have been researching, collecting, curating, and protecting over 8 million animals, plants, and fossil specimens.





Street Address

San Diego Natural History Museum
1788 El Prado, Balboa Park
San Diego, CA 92101

Mailing Address

San Diego Natural History Museum
P.O. Box 121390
San Diego, CA 92112-1390

sdnat.org