



SUMMER CAMP

theNAT
SAN DIEGO NATURAL HISTORY MUSEUM

2016 Summer Camp Information

Before Camp Begins:

- Complete the [Camper Release Form online](#) at time of registration.
- **Please note all allergies (especially food allergies) on the Camper Release Form.**
- Camps are held in the Learning Labs at the San Diego Natural History Museum located at 1788 El Prado, San Diego, CA 92101 in Balboa Park (map below).
- Our camps are designed by grade level. Children in camps for grades K-8 should enroll in camps based on what grade they will be entering in September 2016. To ensure a high quality experience, it is important that all participants are with their same-age peers.
- Pre-K campers **MUST** be **4 years old** by the start of camp.

The First Day of Camp:

- Parking is free in Balboa Park. Parking can be difficult, particularly in the afternoon. Please allow sufficient time to find a parking space for drop off and pick up. Remember to lock your vehicle.
- **To check in**, please walk your child into the Museum via the north entrance (by the giant fig tree) 15 minutes prior to the start of camp and check in at the registration table. You will have the opportunity to visit the classroom and meet the camp instructor and aides.
- **Pick up** will take place at the summer camp tent on the south end of the parking lot east of the Museum. You may pull your vehicle up to the turnout.
- IDs are required at pick up. Please be sure to list the person(s) picking up your child on the **Camper Release Form** by the name on their ID.

Pre-K/K Half-Day Camps:

- All camps take a break for a snack. Snacks are not provided. Please bring a snack and a drink.
Note: Summer Camp at theNAT is nut-free.
- Camp runs from 9 AM to 12 PM daily.

Grade 1-8 Full-Day Camps:

- All camps take a break for lunch and a snack. Lunches and snacks are not provided. Please provide lunch, snack, and a beverage for your child daily. Please write a name on your child's lunch bag and beverage container.
Note: Summer Camp at theNAT is nut-free.
- Camp runs from 9 AM to 4 PM daily.

All Camps:

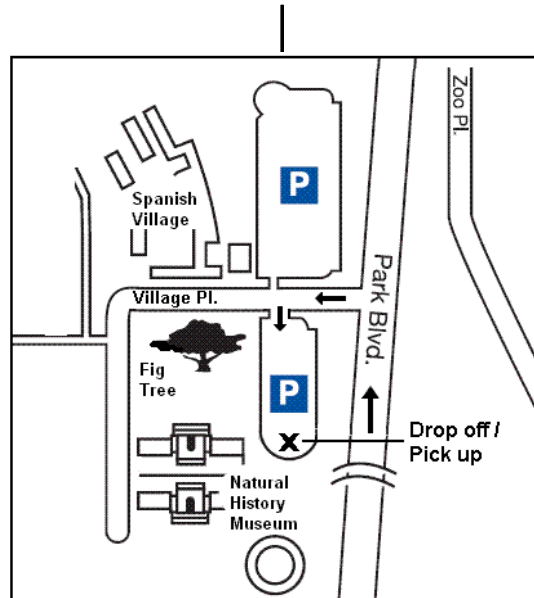
- Children should wear comfortable play clothes that can get dirty. **Closed-toed shoes ONLY. NO FLIP FLOPS OR SANDALS.**
- All camps will visit the Museum exhibitions and spend time in the Park. We recommend hats and sunscreen.

- Starting Monday afternoon and for the rest of the week, you will drop off and pick up your camper at the summer camp tent outside at the end of the parking lot.
- **Please be prompt** in dropping off and picking up your child.
 - **If you are running late or if you will be absent**, please call Customer Service at 877.946.7797.
 - **If you are more than 15 minutes late for pick up**, a \$10 late fee will be assessed.

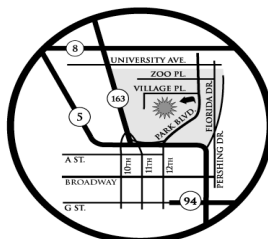
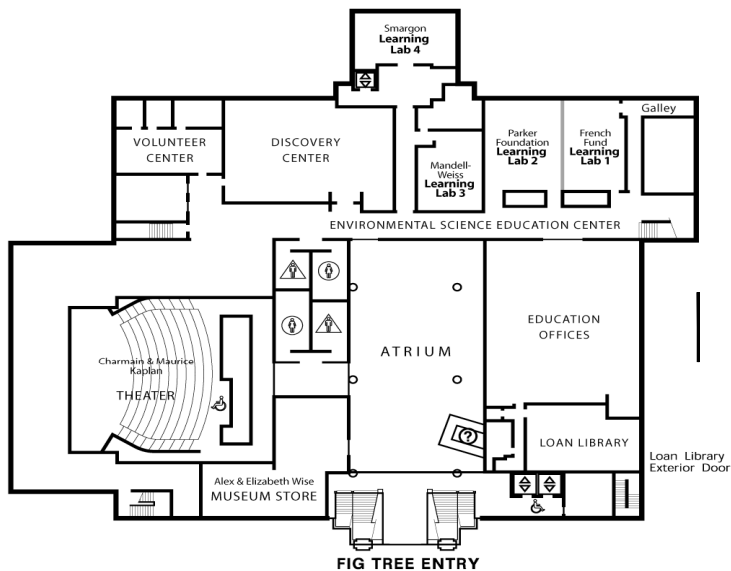
For additional information, please refer to the FAQ.

PARK MAP

For more detailed directions, visit
www.sdnat.org/directions



EDUCATION MAP 1st FLOOR



SAN DIEGO NATURAL HISTORY MUSEUM
 1788 El Prado, San Diego, CA 92101