



theNAT
SAN DIEGO NATURAL HISTORY MUSEUM

Before Camp Begins:

- Fill out and submit the **Camper Release Form** and the **Camper Emergency Release Form** at least **two weeks prior to the camp** online.
- **Please note all allergies (especially food allergies) on the Emergency Release Form.**
- Camps are held in the Learning Labs at the San Diego Natural History Museum in Balboa Park (map below).
- Our camps are designed by upcoming grade level for the 2014-15 school year. To ensure a high quality experience it is important that all participants are with their same age peers.
- Pre-K campers **MUST** be four years old at the start of camp.

The First Day of Camp:

- Parking is free in Balboa Park. Please allow sufficient time to find a parking space. Remember to lock your vehicle.
- **To check in**, please walk your child into the Museum via the North Entrance (fig tree) 15 minutes prior to the start of camp and check in at the registration table. You will have the opportunity to visit the classroom and meet the camp instructor and aides.
- **Pick up** will take place at the summer camp tent on the south end of the parking lot east of the Museum. You may pull your vehicle up to the turnout.
- IDs are required at Pick Up. Please list the person(s) picking up your child on the **Camper Release Form** by the name on their ID.

Pre-K/K Half Day Camps:

- All camps take a break for a snack. Snacks are not provided. Please bring a snack and a drink.
- Camp runs 9 AM to 12 PM.

1st-8th Grade Full Day Camps:

- All camps take a break for lunch and snack. Lunches and snacks are not provided. Please provide lunch, snack, and a beverage for your child daily. Please write a name on his/her lunch bag and beverage container.
- Camp runs 9 AM to 4 PM.

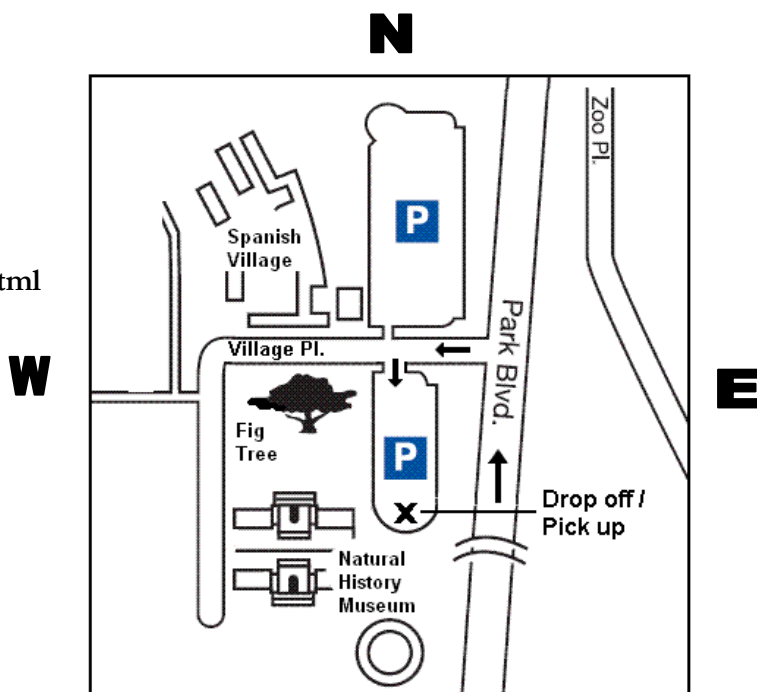
ALL Camps:

- Children should wear comfortable play clothes that can get dirty. **Closed-toed shoes ONLY.**
- All camps will visit the Museum exhibits and spend time out in the Park. We recommend hats and sunscreen.
- **Beginning with Monday afternoon**, you will drop off and pick up your camper at the summer camp tent outside.
- **Please be prompt** in dropping off and picking up your child.
 - **If you are running late or if you will be absent**, please call Customer Service at 619.255.0210 or 877.946.7797.
 - **If you are more than 15 minutes late for pick up, a \$10 late fee will be assessed.**

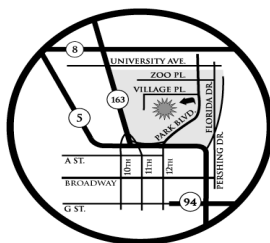
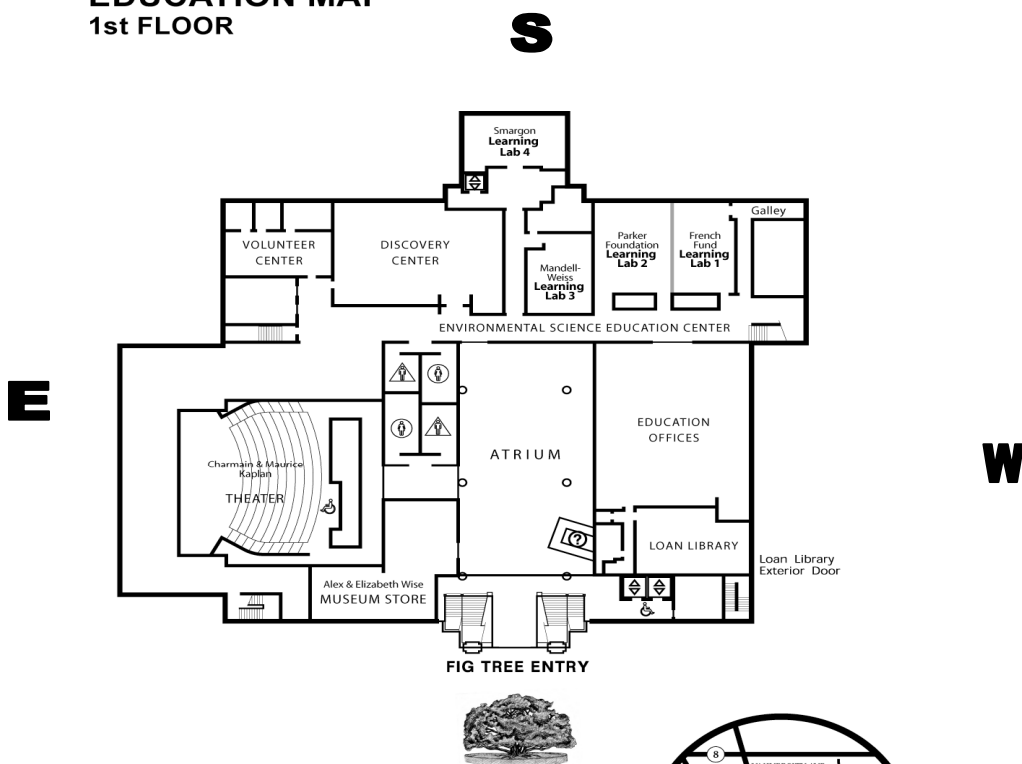
For additional information, please refer to the FAQ.

PARK MAP

For more detailed directions, visit
<http://www.sdnhm.org/visit/directions.html>



EDUCATION MAP 1st FLOOR



SAN DIEGO NATURAL HISTORY MUSEUM
 1788 El Prado, San Diego, CA 92101